

WEST VIRGINIA CHESS BULLETIN

Volume 249

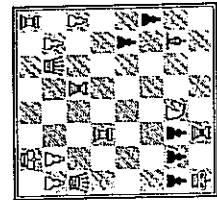
March 2007



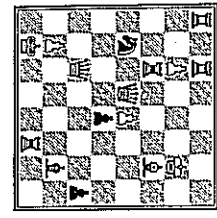
ROUND III ACTION FROM THE 2006 STATE CHAMPIONSHIP

DONALD GRIFFITH WINS TWELFTH STATE TITLE

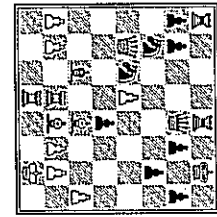
TACTICS CORNER By Benjamin Good
 The following positions are taken from the 14th Annual Parkersburg Homecoming, 2006 US Amateur South, and 2006 State Championship. Find the fastest winning line of play. Answers given on the back page.



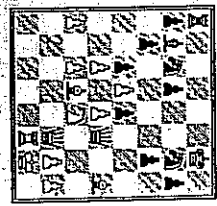
1
 Feather - Boat (Sidelina)
 White to play and win



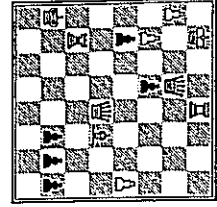
2
 Parli - King
 Black to play and win



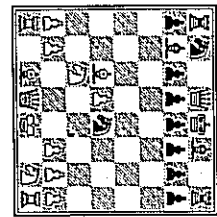
3
 Roush - Sheen
 White to play and win



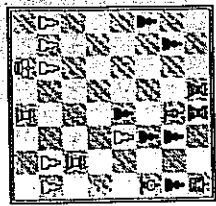
4
 Mager - South
 White to play and win



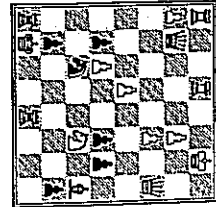
5
 Vaughn - McClunna
 Black to play and win



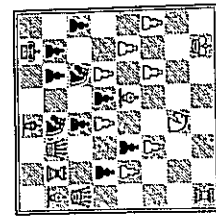
6
 Parli - Helmuth
 White to play and win



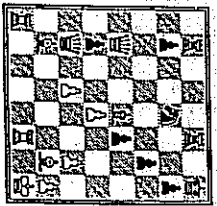
7
 R. Collins - Fields
 White to play and win



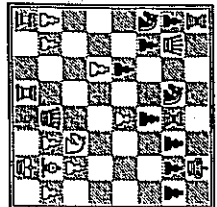
8
 Patchell - Roush
 Black to play and win



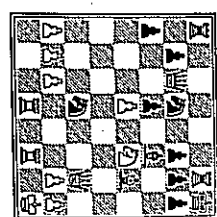
9
 Roush - Madsen
 Black to play and win



10
 Fields - Vaughn
 White to play and win



11
 Good - Michael
 White to play and win



12
 Griffith - Roush
 White to play and win

Donald Griffith of St. Albans captured his twelfth state title at the 2006 West Virginia State Championship. Donald scored was undefeated, yielding only two draws for a score of 5-0. New comer Jens Madsen of Morgantown finished clear second at 4 1/2 - 1 1/2. Jens also gave up no full points, but ended with three draws. Katie King won the junior title with a very creditable score of 3-3. She was also the top player under 1300. Patrick McCartney, a frequent visitor from North Carolina was the top player from 1700-1999. Chuck Vaughn of St. Albans topped the 1400-1699 section. Dave Hundley of Beckley captured the 1300-1399 prize.

The tournament was held from September 2-4, 2006 in St. Albans, West Virginia. Twenty players competed for the title. Chuck Vaughn directed and John Roush organized (or disorganized!) the event.

A small selection of games follows with a cross table at the end of this article. For more games and pictures, see the association web site.

Jens Madsen-Jim Fields Rd. 1
 1. e4 c5 2. c3 d5 3. exd5 Qxd5 4. d4 cxd4 5. cxd4 e5 6. dxe5 Qxd1+ 7. Kxd1 Be5 8. f4 Ne7 9. Nc3 Bf5 10. Nf3 Nbc6 11. Bc4 a6 12. Ke2 Nb4 13. a3 Nc2 14. Ra2 Nd4+ 15. Nxd4 Bxd4 16. Bd2 Rd8 17. h3 h5 18. Raal b5 19. Ba2 Rh6 20. Rad1 Rg6 21. Kf3 h4 22. Bel Bxc3 23. Rxd8+ Kxd8 24. Bxf7
(From the beginning I had a hard time believing that Black had comp for the pawn,



Chuck Vaughn (right) hands the trophy to Donald Griffith but I haven't found an improvement. Here 24.Bxc3 Rg3+ 25.Kf2 Ng6 26.Bd2 Ke8 is just as unclear as the text.-JER)

Bxel 25. Bxg6 Bxg6 26. Rxel Bc2 27. Ke Nf5 28. Kg5 g6 (?) 29. Re2 (29.Kxg6!?) Ne3+ 30.Kf7 Nxg2? 31.Re2+-) Bb1 30. Kf Kx8 31. e6 Ne7 32. Rd2 Be4 33. Kg5 (33.Rd7 Nd5+ 34.Ke5 or 33...Ng8+ 34.Kd Bxg2 35.Ra7+- or 33...Nc6 34. Rh7 +-) Nf 34. Kxb4 Nxf4 35. Rd4 g5+ 36. Kg4 Bxg2 37. Rd6 Bxb3+ 38. Kxe5 Nxe6+ 39. Kh4 Bf5 40. Rxa6 Ke7 41. Rb6 Nd4 42. Kg5 Kd7 43. Kf4 Ke7 44. Rh6 Bd7 45. Ke5 Nb

TABLE OF CONTENTS

(Continued on next page)
 Tactics Corner.....Inside Cover
 2006 W.Va. Championship.....p.1
 2006 W.Va. Action Champ.....p.5
 8th Mountaineer Open.....p.8
 14th Annual Park. Homecoming.....p.11
 President's Report.....p.17
 WV at King's Island.....p.18
 2005-2006 Treasurers Report.....p.20
 Tourney Announcements.....pp. 9 & 10

46. Kd5 Bx8 47. Rf6 Bh5 48. Rf5 Bg6 49.
Rf3 Bb1 50. Ke5 Nd5 51. Kd4 Kb6 52. Kc3
Bc4 53. Rf6+ Nc6 54. Rd6 Kc5 55. Rh6 b4+
56. axb4+ Nxb4 57. Rh4 Nd5+ 58. Kd2 Kd4
59. Rxe4+ ½ - ½

Donald Griffith-John Roush Rd. 2

1. e4 c5 2. Nf3 e6 3. Nc3 Nc6 4. d4 exd4 5.
Nxd4 a6 6. Be2 d6 7. O-O Nf6 8. Be3 Be7
9. f4 O-O 10. Kh1 e5 11. Nb3 exf4 12. Bxf4
Bc6 13. Qe1 Ne5 14. Qe3 Qc7 15. Rad1
Rf8 16. Nd4 Nf7 17. Nd5 Bxd5 18. exd5
Kh8 19. Nf5 Bf6 20. Bg5 Rg8 (20... Nge6?)
21. Nxd6 looks ghastly for Black! 21. Bd3
Nxd3 22. Bxf6 Nxf6 23. Qxd3 Ng4 24. Rf4
Ne5 25. Qh3 Ng6 (This is directed against
the threat of Rh4. If 25... g6 26. Rh4 f6
27. Nxd6. How and where Black could have
improved is a good question. Why I (JER)
wrote to play into these Sicilian positions
which I obviously don't understand is a
bigger question!) 26. Rf2 Ra8 27. Rd1
Re5 28. Nd4 Rge8 29. Qf3 Kxg8 30. b3 R5c7
31. c4 Qc5 32. Nf5 Re1 33. h4 Rxf1+ 34.
Rxf1 f6 (34... Rf8 35. Qg3 threatening the
pawn on d6 and h5 followed by Qxg7++)
35. Nxe7 Kxe7 36. Qxf6+ Kh6 37. Qg5+
Kg7 38. h5 Re5 39. h6+ 1-0

Gary Cummings-Jens Madsen Rd. 2

1. e4 e5 2. Nf3 Nc6 3. Bb5 a6 4. Ba4 Nf6 5.
O-O Nxe4 6. d4 b5 7. Bb3 d5 8. dxe5 Be6 9.
Be3 Be7 10. c3 O-O 11. Nbd2 Nc5 12. Bc2
Qd7 13. Nb3 Nxb3 14. axb3 Bg4 15. Bf4
Rf8 16. Qe2 Be5 17. h3 Bf5 18. Rfd1 Ne7
19. b4 Bb6 20. Nd4 Bxc2 21. Qxc2 Ng6 22.
Bg3 Nf8 23. Kh2 Bxd4 24. Rxd4 e6 25.
Rad1 a5 26. bxc5 Rxc5 27. f4 Ne6 28. R4d2
Rd2 29. Bh4 Rdb8 30. f5 Nc5 31. f6 Qe6 32.
Bg3 exf6 33. exf6 Nc4 34. Rc2 Qxf6 35.
Qd3 Ral 36. Rdcl Rxe1 37. Rxe1 Rf2 38.
Qb1 Rd4 39. Rf1 Qg6 40. Bf4 h5 41. Qe1

Rd2 42. Bcl Ral 43. Qh4 f6 44. Qf4 Qe8
45. Qc7 Qe3+ 0-1

David Hundley-Chuck Vaughn Rd. 3

1. Nf3 Nf6 2. c3 e6 3. g3 b6 4. Bg2 Bb7 5.
O-O Be7 6. d4 O-O 7. Re1 d6 8. Qc2 Be4 9.
Qd1 Nbd7 10. Nbd2 Bb7 11. Qc2 f6 12. e4
c5 13. e5 dxe5 14. Nxe5 Bxe2 15. Kxe2
exd4 16. Ne6 Qe8 17. Nxd4 Rc8 18. N2f3
Nc5 19. Re2 Qd7 20. Kf1 Rf8 21. Bc3 Nd5
22. Rael Qb7 23. Ng1 Nf6 24. Ndf3 Nd5
25. Ne5 Qa6 26. Ng3 Nxe3+ 27. fxe3 Qxe2
28. Re2 Qa6+ 29. Kgl f6 30. Ng6 Qb7 31.
Nxe7+ Qxe7 32. Nd4 e5 33. Nf5 Qe6 34.
Re1 Nd3 35. Rd2 e4 36. Qd1 Kf7 37. Nd4
Qd7 38. Qh5 g6 39. Qh4 f5 40. Qf6 Rf8 41.
Qh4 Rf7 42. Qh3 Rcf8 43. Rdd1 Rd8 44.
Qg2 Qe8 45. Ne2 Rf7 46. Nd4 Ne5 47. h3
Qe7 48. Re2 Nf3+ 49. Rxf3 exd3 50. Qxf3
Qe4 51. Qe2 Re8 52. Rd3 Rde7 53. Kf2 Qh1
54. h4 Qh2+ 55. Kf3 Qxe2+ 56. Nxe2 g5 57.
hxg5 hxg5 58. Nd4 Kge5 59. Ne6 ge4+ 60.
Kf2 Rh7 61. Kg2 Reh8 62. Ne7+ Rxe7 63.
Rd6+ Kge5 64. Rd3 Reh7 65. e4 Rf2+ 66.
Kgl fxe4 67. Rd5+ Kf6 68. Rd6+ Ke5 69.
Rd7 R8h7 70. Rd8 R2h6 71. Rd2 e3 72. Rd8
Rh1+ 73. Kg2 Rf12+ 74. Kf1 0-1

David Hines - Ben Good Rd. 4
1. e4 e6 2. d4 d5 3. Nc3 dxe4 4. Nxe4 Bf5 5.
Ng3 Bg6 6. Nf3 e6 7. Bd3 Nf6 8. O-O Bd6
9. Bg5 Qc7 10. Bxf6 gxf6 11. Re1 Nd7 12.
c4 O-O 13. a3 e5 14. b4 exd4 15. Nxd4
Bxd3 16. Nb5 Qb6 17. Qxd3 Nc5 18. Qc2
Kb8 19. Nxd6 Qxd6 20. c5 Qc6 21. Recl f5
22. a4 f4 23. b5 Qc7 24. Ne4 f5 25. Nd6
Rhg8 26. Kh1 Qe7 27. f3 Nd5 28. Nxb7
Kxb7 29. c6+ Kb8 30. e5 Nb4 31. Qf2
Rxd1+ 32. Rxd1 Nd5 33. b6 axb6 34. axb6
Nc3 35. c7+ Kb7 36. Rd8 Qal+ 37. Qg1
Qxg1+ 38. Kxg1 Rxe2+ 39. Kh1 Rc2 40.
Rb8+ Ka6 41. e8=Q+ Rxc8 42. Rxc8 Kxb6
43. Re8 Kc5 44. Rxe6 Kd4 45. Kgl Nd5 46.
h4 h5 47. Ke2 Ne3 48. Rh6 Nd1+ 49. Ke2
Nc3+ 50. Kf1 Ke3 51. Kg2 Ne2 52. Rxb5
Nd4 53. Rh8 1-0

Jens Madsen-Donald Griffith Rd. 5

1. e4 c5 2. Nf3 e6 3. e3 Nc6 4. Bb5 Nge7 5.
Nf3 a6 6. Bxc6 Nxc6 7. O-O d5 8. e5 Be7 9.
Nc2 O-O 10. d4 exd4 11. exd4 f6 12. Re1
fex5 13. Nxe5 Nxe5 14. Rxe5 Bd6 15. Bg5
Qc7 16. Re3 Bxh2+ 17. Kh1 Bf4 18. Rc3
Qf7 19. Bxf4 Qxf4 20. Rf3 Qh4+ 21. Kgl
Bd7 22. Ne1 Ra8 23. Rg3 Rcd 24. Nf3 Qf6
25. b3 Rcd 26. Re1 Rf8 27. Rxc7 Rxc7 28.
Qd2 Qf5 29. Qa5 Qc2 30. Qb4 Qc1+ 31.
Kh2 Qh6+ 32. Rh3 Qf4+ 33. Rg3 Qh6+ 34.
Rh3 Qf4+ 35. Rg3 Qh6+ ½ - ½

Donald Griffith-Delmar Webb Rd. 6

1. e4 Nf6 2. e5 Nd5 3. d4 d6 4. Nf3 Bg4 5.
Be2 g6 6. c4 Nb6 7. exd6 exd6 8. O-O Bg7
9. Ne3 O-O 10. Be3 Nc6 11. b3 e6 12. h3
Bxf3 13. Bxf3 Rcd 14. Rcl a6 15. d5 exd5
16. Nxd5 Nxd5 17. Qxd5 Re8 18. Rfd1
Rxe3 19. fex3 Be5 20. c5 Qg5 21. exd6
Qxe3+ 22. Kf1 Bg3 23. Qc5 Qf4 24. Rc4
Qf6 25. Kgl Re8 26. d7 Re1+ 27. Rxe1

Bxe1 28. Qe3 Bh4 29. Rxb4 Qxh4 30. Qe8+

John Roush-Patrick Rd. 6

1. f4 g6 2. Nf3 Bg7 3. e3 Nf6 4. Be2 d5 5.
d3 b6 6. O-O Bb7 7. c3 O-O 8. Qe1 Nbd7 9.
Bd1 Nc5 10. Be2 a5 11. Ne5 Nf7 12. d4
Ne4 13. Nxd7 Qxd7 14. Nd2 Nd6 15. Qf2 f6
16. b3 e5 17. Ba3 Rf8 18. Bxd6 Qxd6 19.
fex5 fxe5 20. Rael e4 21. Qh4 Rf8 22. c4 c6
23. Bxe4 dxe4 24. Nxe4 Qd8 25. Rxf8+
Qxf8 26. Rf1 Qd8 27. Qf4 Qc7 28. Rxf8+
29. Qg3 Rxf1+ 30. Kxf1 Bf8 31. Nxb7
Qxb7 32. e4 Qd7 33. Qe3 Bg7 34. d5 exd5
35. exd5 Qb5+ 36. Ke1 Qb4+ 37. Ke2 Qd4
38. Qxd4 Bxd4 39. Kd3 Be5 40. Kc4 Kf7
41. e5 Ke7 42. Kb5 Kd7 43. Kc4 Bgl 44. h3
Bf2 45. g4 h6 46. a3 Bc5 47. b4 Be3 48.
bxa5 bxa5 49. a4 Bf2 50. Kd3 Kc7 51. Ke4
Kb6 52. e6 Bh4 53. Ke5 Kc5 54. d6 Kc6 55.
d7 Be7

Patrick McCartney (L) and John Roush
contest a Bird's Opening in the sixth round.



Jim Fields (L) battles Jens Madsen in Round 1.
Dave Hines (L) and Dave Hundley watch.

L#	NAME	ST	Cross Table:						TOTAL	
			1	2	3	4	5	6		
1	Dennis Griffin	WV 2047*	2059*	W--17	W--3	W--5	D--4	D--2	W--9	5.0
2	Uma Hadden	WV 2120*	2122*	D--15	W--13	D--4	W--3	D--1	W--5	4.5
3	John Homan	WV 2007*	2008*	W--10	L--1	W--9	L--2	W--11	W--3	4.0
4	Patrick Hecartaney	NC 1989*	2005*	W--11	W--7	D--2	D--1	W--8	L--3	4.0
5	David Hines	WV 1944*	1952*	W--6	W--8	L--1	W--7	D--8	L--3	3.5
6	David Hundley	WV 1375*	1412*	W--5	H--8	L--14	W--5	D--17	W--13	3.5
7	Benjamin Good	WV 2037*	2007*	W--19	L--4	W--10	L--5	D--13	D--12	3.0
8	Harvill Barker	WV 2011*	2013*	W--14	L--5	W--17	W--11	L--9	W--1	3.0
9	Darrah Webb	WV 1806*	1804*	W--20	W--20	L--3	W--14	D--5	L--1	3.0
10	John Setton	EV 1327*	1365*	L--3	W--20	L--3	W--14	D--5	L--1	3.0
11	Galen Kaller	WV 1307*	1377*	L--4	W--16	W--13	L--8	W--20	W--15	3.0
12	Ruthanne King	WV 1338*	1368*	L--13	D--14	L--15	W--16	W--20	D--7	3.0
13	Gary Cummings	WV 1834*	1802*	W--12	D--2	L--1	W--11	D--7	L--6	2.5
14	Charles Mough	WV 1405*	1479*	L--6	D--12	W--6	L--9	D--15	D--16	2.5
15	James Fields	WV 1613*	1578*	D--2	L--17	W--12	L--13	D--14	L--10	2.0
16	Dong Chen	WV 1089*	1138*	L--9	L--11	W--20	L--10	D--18	D--14	2.0
17	Sean Parril	WV 1495*	1487*	L--1	W--15	L--8	D--10	L--6	W--1	1.5
18	Michael Turner	WV 1746*	1747*	W--20	U--5	D--8	D--10	U--6	U--6	1.0
19	David Michael	WV 1515*	1512*	L--7	U--6	D--8	D--10	U--6	U--6	1.0
20	Amanda Brabant	NC 1095*	1051*	L--18	L--10	L--16	L--6	L--13	L--11	0.0

2006 WV Action Championship

By Benjamin Good

The 2006 Action Championship was held on November 4. The event is typically held in the spring, but scheduling conflicts had this event pushed back until November. Next year's event should be held in April 2007 in Beckley. The turnout for the event was not so great at 8 players. It was decided that it would be much easier to run the event as a round robin and have seven games instead of the previously announced six games. The two top-rated players in the event were Donald Griffin and Ben Good, the reigning action champion. All was going as to be expected until the fifth round when Donald lost to Mike Turner. Donald had already escaped near-certain defeat against youngster Daniel Parrish in the third round. Donald and Ben were set to play in the following round. Ben successfully held a draw to repeat as the Action Champion.

Parrish (1394) - Griffin (2047)
Sicilian Defense, Dragon Variation
 1. e4 e5 2. Nf3 d6 3. d4 exd4 4. Nxd4 Nf6 5. Nc3 g6 6. Bc3 Bg7 7. Qd2 Ne6
 While it is true that White has a reply to ...Ng4 on move 6 (6...Ng4?? 7. Bb5+), he does not have one here. I am surprised that Donald did not play 7...Ng4 to trade the bishop. The "correct" move order is to play 7. f3 and 8. Qd2.
8. f3 O-O 9. g4!?
 This move is not so spectacular on its own provided the castles shortly thereafter. Donald decides to mix things up a bit, though. I don't think such drastic measures were necessary. Black could continue on with ...Bd7, ...Rc8, etc.

9...Bxg4? 10. fxg4 Nxg4 11. Nxc6 bxc6 12. Bb3
 12. Bb4 or 12. Bg5 could also be considered.
 12...Nxc3 13. Qxc3 Rb8 14. Bb1 Qa5 14...d5 was the other possibility.
 15. O-O Rb4 16. Qf3 Qb6+
 16...Rc4 with ...d5 to follow is another idea.
 17. Kh1 Bc5 18. Bb6
 This move is an attempt to relocate the bishop to b3 to remove pressure against the queenside.
 18...Bf6?
 18...Rxb2 must be a better move. White should then play 19. Bb3 as 19. Bxf7+ could lead to a trapped bishop and an overworked queen.
 19. Bb3 Qc7 20. a3 Rb7 21. Rf2 Rb8 22. Rb1 a5 23. Na4 Rb5 24. Nc3 Rb5 25. Qd3 Kg7 26. Ne2 Qa7 27. Nd4
 White is still much better, but 27. Rxf6! is decisive.
 27...Rc8 28. Ba4?
 28. Qc4! hits both f7 and e6.
 28...Qc5 29. Nxc6?
 White trades off his active pieces and Black gets counterplay. White should take his time and play something like 29. c3 with b4 to follow.
 29...Rxc6 30. Bxc6 Qxc6 31. Rc2 d5 32. exd5 Rxd5 33. Qf3 Qd7 34. b3 Rf5 35. Qh3??
 White blunders the game away. He could still fight on with 35. Qg2.
 35...Qd5+ 36. Kgl Bd4+ 37. Re2 Rg5+ 38. Qg3 Rxc3+ 39. lxxg3 BxI2+ 40. Rxf2 l5 41. Kh2 e5 42. Kh3 e4 43. g4 Qd4



LONG TIME SECRETARY-TREASURER OF WVCA TOM BERGQUIST TENDS TO BUSINESS.

44. Re2 f4 45. g5 f3 46. Re1 e3 47. Kg3 f2
48. Rcl Qd2 49. Rh1 e2 0-1

Turner(1723) - Griffith
Seitlin Defense, Closed

This game looks to be a certain draw until the last two moves.

1. e4 e5 2. Nc3 e6 3. Nge2 Nc6 4. g3 Nf6 5. Bg2 d5 6. cxd5 Nxd5 7. Nxd5 exd5 8. d4 Be6 9. O-O Be7 10. Be3 exd4 11. Nxd4 Nxd4 12. Bxd4 O-O 13. f4 Qd7 14. e3 Re8 15. Qd2 b6 16. Kh1 Be5 17. Rad1 Rad8 18. Qf2 Bg4 19. Rd2 Bxd4 20. Qxd4 Bh3 21. Bxf3 Qxf3 22. Rfd1 Rd6 23. Qf2 Red8 24. f5 Qh5

So far, so good. Both players are maneuvering to try to get an advantage, and it still seems drawish. Now the game ends with...

25. e4?! dxc4?? 26. Rxd6 1-0
Black has the better chances after 25...d4 (26. Rxd4 Qxd1+ -+). White's best option was 25. Rd4 to block the pawn's advance before opting for e4.

Fields(1613) - Good (2038)

English Opening

1. e4 e6 2. Nc3 d5 3. exd5 exd5 4. e3 Nf6 5. Nf3 Be7 6. Be2 O-O 7. O-O Re8 8. d3

White apparently does not want to get in to a Queen's Gambit structure. White maneuvers his pieces while Black grabs the space that White didn't want.

8...Nbd7 9. Qc2 Nf8 10. Bd1 e5 11. Qc2 Ne6 12. Bh3 Nc7 13. a4 a5 14. Bd2 b6 15. Racl Ba6

Black is positioning his pieces to pressure the White position but does not have an exact target in mind just yet.

16. Ne1 Nc4!?
16...Ne4 allows White to trade and relieve some pressure but Black maintains a space

advantage. Another idea is 16...Bd6 which also adds pressure on the e-file.

17. Re2 e4 18. dxc4 dxc4 19. Bxc4??
19. Ba2 was a move White would still be in trouble, but the move played loses material. Black now wins easily.

19...Bxc4 20. Qxc4 Nxd2 21. Rxd2 Qxd2 22. Qxc7 Qxb2 23. Nd5 Be5 24. Nd3 Qh3 25. N5f4 Ra8 26. Nxc5 bxc5 27. Qxa5 e4 0-1

Griffith - Good

Caro-Kann Defense, Panov-Botvinnik

Attack

After Donald's loss to Mike Turner in the previous round, he needed a win here to gain a share of the Action Championship title.

The opening played results in a wellknown endgame by the 16th move. There is no real consensus that I'm aware of on the position, but I know that either player can lose without accurate play:

1. e4 e6 2. d4 d5 3. exd5 exd5 4. e4 Nf6 5. Nc3 Nc6 6. Nf3 Bg4 7. exd5 Nxd5 8. Qb3 Bxf3 9. gxf3 e6

The other possibility is 9...Nb6. The one time I played ...Nb6 against Donald was disastrous, but Donald missed the winning moves and we drew. I still think that...Nb6 is the move to play if you do not want a draw.

10. Qxb7 Nxd4 11. Bb5+ Nxb5 12. Qc6+ Kc7 13. Qxb5 Qd7 14. Nxd5+ Qxd5 15. Qxd5 exd5 16. Be3 Ke6 17. O-O Re8+ 18. Kb1 Be5 19. Rhel Bxe3

This is the first deviation from previously played moves. Black should probably play 19...Kd6 first as White now wins a pawn by force. However, with both rooks on the board, this is no guarantee of a win.
20. Rxc3+ Kd6 21. Ra3 Rc7 22. Ra5 Rhc8 23. Raxd5+ Ke6 24. f4 f6
So far Black is holding well.

25. f5+ Ke7 26. a3 Rh8 27. b4 Rb6c8 28. Rf4d2 g6 29. fxg6 hxg6 30. Kb2 Rh8 31. f4 Rh3

Black tries to the down White's rooks to the defense of his pawns.

32. f5 gxf5 33. Rxf5 Ke6 34. Re5 Rxc5?!
White would like to trade one pair of rooks and make his pawn advantage more important. Black feels like he can still hold the position and agrees to the trade, but this is not an easy task.

35. bxc5 Rh5 36. Rc2?

The stronger continuation is 36. c6! when Black must be very careful not to lose. I've not found a definite win or a definite draw in analyzing this position yet. My best guess is that it is technically drawn but practically lost given the time control and the difficulty of the position. Perhaps some of our astute readers can find the correct line of play.

After the text, Black easily draws. The end of the game was not recorded due to time pressure.

36...Kd7 1/2-1/2

Fields - Parrish

Queen's Gambit Declined, Exchange

Variation

2006 Action Championship Crosstable										
Player	1	2	3	4	5	6	7	8	TOTAL	
1 Benjamin Good WV 2007* 2014*	D	W	W	W	W	W	W	W	6.5	
2 Donald Griffith WV 2065* 2052*	D	*	W	L	W	W	W	W	5.5	
3 James Fields WV 1578* 1612*	L	L	*	W	W	W	W	W	5.0	
4 Michael Turner WV 1747* 1740*	L	L	L	*	W	D	W	W	4.5	
5 Daniel Parrish WV 1407* 1411*	L	L	L	L	*	W	W	W	3.0	
6 Albert Valentine WV 1332/19 1333*	L	L	L	D	L	*	W	W	2.5	
7 Brian Hammons WV 0 1017/07	L	L	L	L	L	L	*	W	1.0	
8 Caleb Hansen WV 0 640/07	L	L	L	L	L	L	L	*	0.0	

1. e4 Nf6 2. Nc3 e6 3. g3 d5 4. exd5 exd5 5.

d4 e6 6. Bg2 Bf5 7. Qh3 b6 8. Nf3 Nd7 9. O-O Bd6 10. Nf4 Be6 11. e4?

White doesn't see that the bishop on e6 will attack his queen on b3.

11...dxc4 12. Nxe4?? Bxb3 13. Nxd6+ Kf8 14. axb3

White has some compensation for the queen, but it should not be enough. Black must be careful, though.

14...Qe7?!

14...Nd5 is a better option. Now White could play f5. Nb5 and perhaps would have enough compensation. Instead we have...

15. Nf4f5

Now 15...Nd5 is met by 16. Bxd5 exd5 17. Bf4, when Black is treading on thin ice.

15...Nb8 may be the best move. However, Black plays the seemingly innocuous...

15...g6? 16. Bh6+ Kg8 17. Ne7# 1-0
Checkmate! If Jim hadn't already told me he blundered the queen away I might have believed it was a brilliant sacrifice.

8th Mountaineer Open

By Jens Madsen

After a half-decade without organized chess, a new Morgantown Chess Club was formed in November 2005. The young club has organized three weekend tournaments this past year, with participation numbers ranging between 16 and 27. The format has been the same for all of these events, with games using a time control of G/73 that allows four rounds in one (long) day.

The resurrected Mountaineer Open ended the tournament season with a modest turnout of seventeen. Old-timers may remember the seven prior editions of this tournament, which were played between 1986 and 1997, mostly under the direction of Mike Baker. One decade later it was good to see Mike back at the board battling it out in the Open section with a respectable 50% score.

Open Section

No.	Name	Pre-Rate	Post-Rate	Rd.1	Rd.2	Rd.3	Rd.4	Place
1	Magar, Thomas P	2201	2206	W5 1.0	B4 2.0	W3 3.0	B2 3.5	1
2	Madsen, Jens I	2107	2100	B6 1.0	W3 1.0	B8 2.0	W1 2.5	3
3	Hines, David F	1966	1984	W7 1.0	B2 2.0	B1 2.0	W4 3.0	2
4	Young, Shih Houng	1870	1868	B8 1.0	W1 1.0	B7 2.0	B3 2.0	4-6
5	Hohn, Jeff E	1821	1788	B1 0.0	W8 0.0	B6 0.0	-U- 0.0	8
6	Felton, Michael B	1762	1739	W2 0.0	B7 0.0	W5 1.0	B8 1.0	7
7	Balter, Danny	1576	1591	B3 0.0	W6 1.0	W4 1.0	-B- 2.0	4-6
8	Baker, J. Michael	1612	1660	W4 0.0	B5 1.0	W2 1.0	W6 2.0	4-6

In the Open section, the main favorite was NM Tom Magar from Pittsburgh, who is a frequent guest at WV tournaments. He is a repeat winner of the Parkersburg Homecoming tournament, and made his second trip of the year to Morgantown. His main rivals were expected to be Jens Madsen and Dave Hines with Shih-Houng Young as a potential outsider. Magar struggled in his first round game against Jeff Hohn, who had him on the ropes, but unfortunately Jeff hung a knight and had to immediately resign. From this point on however, Magar showed little hesitation and finished off Young and Hines in the subsequent rounds. This left him a full point up before the final round where he drew Madsen.

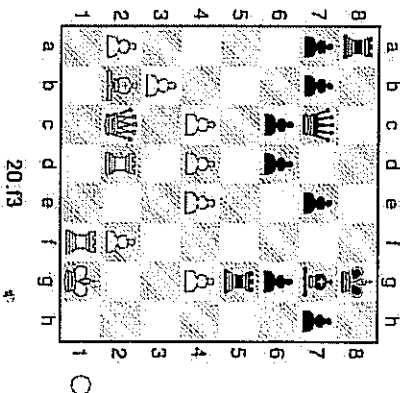
Thomas Magar (2201) - David Hines (1966)
8th Mountaineer Open (Rd.3), Morgantown, 10-21-2006

This game from Round Three decided the tournament outcome. 1.d4 e5 2.Nf3 Nf6 3.g3 e6 4.Be2 Be7 5.b3 Although this might seem like a

slightly odd plan due to the potential weakening of the a1-h8 diagonal, this is a well-known plan against the Leningrad Dutch.

5...d6 6.Bh2 0-0 7.d4 e6 8.c4 Nc4 9.Qc2 Nd7 On its way to support the outposted e4-knight 10.Nc3 Nd6 11.Rxd1 Qc7 12.Nxc4 Nxc4 13.Nd2 Nxd2 14.Rxd2 Recapturing with the Queen would

prevent Black's main plan of ...f4. However, after 14...Qxd2 e5 15.dxe5 dxe5 the position looks rather even. 14...f4 it is now or never. If Black sits around waiting, White can stop this plan from ever happening with a simple e3. 15.Be4 Another possibility was 15.d5 Bxb2 16.Qxb2 fxe3 17.bxe3 with a slight White advantage 15...Kxd3 16.bxc3 Bf5 17.Bxf5 Rxf5 18.e4 Rh5 In retrospect this move, which may not be an error in itself, is the beginning of a bad plan that eventually costs the game. 19.g4 Re5



I distinctly recall thinking "Dave, don't get your Rook trapped!" while observing this game. Chess is always so easy from the spectator's perspective! 20.f3 h5? 21.Re2 Black's previous move helped White by forcing this great move. Not only does it protect the g-pawn it also vacates the c1-g5 diagonal and prepares to pick up the troubled (trapped) rook. 21...hxg4 22.Kxd4 Qd7 23.Qc2 Rf7 Last chance to stay in the game is 23...c5? 24.e5 cxd4 25.Bxd4 24.Kxf8+ Kxf8 25.Kh1? More powerful was e5!, cutting off the poor rook's last escape route. 25.e5 dxe5 26.Be1 25...Kg8 The building is on fire, but Mr. Rook remains calm at his desk. 25...Rd5 had to be played. 26.Be3 Takes away the a5-square 26...e5 27.d5 cxd5 28.cxd5 Qe7 29.Bd2 Bf6 30.Qh3 Qe8 31.Qf3 Kf7 32.Rf2 And Black resigned. Not only does White win the exchange, he also penetrates Black's position with lethal effect 1-0

(Continued on next page)

2007 Action Championship

Tourney Date: April 21, 2007 Number of Rounds: 6 Time Control: G/30 City: Hinton

Address: 505 Stokes Drive

Contact Name: Benjamin Good Email: webmaster@wvchess.org WebSite: <http://wvca.lastpaw.com>

Site: Shepherd's Care Family Worship Center, 505 Stokes Drive, Hinton, WV 25951

Directions: Charleston/Huntington/Parkersburg - Take I-64 E to exit 139, follow State Route 20 south to Hinton. Bluefield/Princeton - Take I-77 N to exit 14, continue to Athens and follow State Route 20 north to Hinton.

Format: 6 round swiss, G/30 Registration: 9am - 10am Rounds: 10am - ASAP (1/2 hour break after Round 2) Entry Fee: \$20, send advance registration to Benjamin Good, 271 Main St, Hinton, WV 25951

Prizes: Trophy to top WV player and top WV junior player. Cash prizes based on 10 players. 1st - \$100, Top U1600 - \$50

Reserve Section

No.	Name	Pre-Rate	Post-Rate	Rd.1	Rd.2	Rd.3	Rd.4	Place
1	Mankey, Joshua J	1577	1621	B5 1.0	W2 2.0	B2 3.0	B4 4.0	1
2	Yeating, Paul	1529	1515	W6 1.0	B8 1.5	W1 1.5	-H- 2.0	5-7
3	Wassell, James T	1376	1380	B9 1.0	B1 1.0	W8 2.0	W7 2.5	2-4
4	Harper, Martin	1457/19	1436/23	W8 0.0	B7 1.0	B6 2.0	W1 2.0	5-7
5	Sun, Yipeng	1237	1205	W1 0.0	B9 1.0	W7 1.0	-B- 2.0	5-7
6	Chinlmann, Tudor	1069/24	1059	B2 0.0	-B- 1.0	W4 1.0	-N- 1.0	8-9
7	Wu, Xiaowen	960/12	1064/15	B- 1.0	W4 1.0	B5 2.0	B3 2.5	2-4
8	Chinlmann, Musat	UNR	1442/4	B4 1.0	W2 1.5	B3 1.5	W9 2.5	2-4
9	Webb, Theodore A.	UNR	804/3	W3 0.0	W5 0.0	-B- 1.0	B8 1.0	8-9

2007 Morgantown May Day Saturday, May 5

Morgantown Chess Club, 100 Coburn Ave (Church basement), Morgantown WV 26501

Format: 4-SS, G/75

Schedule: Reg: 9-9:45 Rds: 10am - 1pm - 4pm - 7pm

Half-point byes: Maximum one per player. Half-point byes requests for round 4 must be made before the start of round 3.

Entry Fee: \$30 postmarked by 5/1, \$50 in site, \$2 discount to MCC members.

Prizes: Two sections, \$8500 b/28 Open: \$120-80, U2000 \$60, Reserve (under 1800): \$90-60, U1600 \$50 U1300 \$40. In the event of six or less players registering for either section, these will be combined (preserving overall prize fund)

Entries: Morgantown Chess Club, c/o Jens Madsen, 379 Baldwin St., Morgantown, WV-26505. (Checks payable to Morgantown Chess Club)

Info: Email: morgantownchess@gmail.com

Ph: 304-599-8915

<http://morgantownchess.org/>

Misc: This is a WVCA Grand Prix Event. No Smoking, Wheel Chair Accessible, USCF membership required (available onsite), WVCA membership (available onsite) only required to earn Grand Prix points. Sponsored & Organized by Morgantown Chess Club.

Send Entries to: Morgantown Chess Club, c/o Jens Madsen, 379 Baldwin St., Morgantown, WV-26505. (Checks payable to Morgantown Chess Club).

Name: USCF ID:

Street Address: USCF Expiration:

City/State/Zip: USCF Rating:

Section (Circle one): Open Reserve (U1800) WVCA member (Y/N): _____

Bye requested for round: _____

E-mail address Entry Fee enclosed: \$ _____

USCF membership required

14th Annual Parkersburg Homecoming

Benjamin Good

The 14th Annual Parkersburg Homecoming chess tournament was held on August 22.

This event is held every year on the Sunday of the Parkersburg Homecoming. Apart

from the chess tournament, there are many events held such as a beauty pageant and a rubber duckey race. This year's event drew

13 players in the open section. The open section winner was again Thomas Magrar of

Pittsburgh, PA. He finished with a perfect 4-

0. Robert Canary returned to tournament chess and finished in a second-place tie with

John Roush and Jim Fuller, at 3-1. The non-rated section was won by Theodore Paul.

Steven Aguilar finished in second. Here are some games from the event.

Magrar (2200) - Skeen (1687)

Modern Defense

1. d4 g6 2. e4 c5 3. d5 d6 4. e4 Bg7 5. Bd3

c5 6. Nc3 a6 7. Nge2 Ne7 8. O-O O-O 9.

Bc3 Nd7

Over the next several moves, Black shuffles

his pieces with an aim of playing ... b5.

Perhaps a better option is playing

...f5 with play similar to a King's Indian

Defense.

10. Qd2 Nf6 11. f3 Ne8 12. Ng3 Qd7 13.

Rb1 Ne7 14. a3 Rh8? 15. b4

Black waited one too many moves to play

... b5. After 14... b5, White may switch

directions and play 15. f4. Now

White has a clear advantage.

15... cxb4 16. axb4 b6? 17. c5 b5?? 18.

exd6 Ncxd5

18... Qxd6 19. Be5 followed by d6 also wins

a piece.

19. exd5 Qxd6 20. Nge4 Qd8 21. Bc2 Nf5

22. Bc5 Ne7 23. Rbd1 Bd7 24. Bb3 Kh8 25.

Ne2 f5 26. Ng5 Bh6 27. Nf7+ Rxf7 28.

Qxh6 Ng8 29. Qe3 Qe8 30. f4 e4 31. Nd4 Nf6 32. Ne6 h6 33. Ne7 Qe8 34. d6 Rf8 35. Qc3 Qd8 36. Ne6 Bxe7 37. Bxe6 Qe8 38. d7 Qxe6 39. Bxf8 Rxf8 40. d8=Q 1-0

Adams (1396) - Rutherford (1896)

Caro-Kann Defense, Advance Variation

1. e4 e6 2. d4 d5 3. e5 Bf5 4. Bd3 Bxd3 5.

Qxd3 e6 6. Nf3 g6 7. Bg5 Qb6 8. h3 Ne7 9.

O-O Nd7 10. e4

e4 is a double-edged move in an Advance

Caro-Kann without the light-squared bishop.

Black can sometimes place a knight on d5

and hold back any White attack. The

pawn on d4 can possibly become a target as

well. In this position the move seems

correct.

10... Nf5?!

This is good for White to play g4. After 11. g4

Ne7 12. Nc3 White has gained tempo and

can think about trading on d5,

followed by Ne4 and a rook to e1.

11. Nc3 h6 12. Bd2 Be7 13. Na4?!

This isn't so good before a trade on d5

because of the pin. 13. exd5 exd5 14. g4

Ng7 15. Racl is good for White.

13... Qa6 14. Nh2 b6 15. a4 Kf8 16. b4 Qb7 17. exd5 exd5 18. Rcl Kg7 19. g4

Nh4 20. Nxb4 Bxb4 21. Qh3 Bg5 22.

Bxg5? hxg5 23. Qg3

White has managed to open the position for

Black. White will likely have to trade pieces

to avoid serious trouble leaving Black with

better endgame chances. After 23. Qe3 Rh4!

24. Qxg5 Ra8 25. Qf4 Rxb2 26. Qxb2

Rxb2 27. Kxh2 Nb8! White has to tread

lightly. Black threatens ... Qe7 and ... Nc6

and one false step can lead to a Black win.

23... Rh4 24. f4 Ra8 25. Rc2?!

Taking the g5 pawn leads to similar problems as in the previous note, but the position is likely better than the one that results from the move actually played.

25...Rh3 26. Qf2 Rb4 27. fxe5 Rxe4+ 28. Kf1 Kxe5 29. Rf1

After 29. Racl White gets some counterplay. Black could still have gone for the queen versus two rooks endgame by playing 26...Rxb2.

29...Rf5 30. Qg2 Rxf1+ 31. Qxf1 Rh5 32. Rf2

32. Qcl Nxe5!? 33. dxe5 d4+ looks very difficult for White.

32...Nb8 33. Rc2 Qe7 34. Nd3 Qh4 35. Qf4 Qe7 36. Ne1?? Rf5

36...Qxb4 is also good. After the text, 37. Qd2 is answered by 37...Qh4 threatening ...Rf1+. Black is now winning. White didn't have much he could do, but a waiting move like 36. Rcl was better than the move played.

37. Qg3 Qxb4 38. h4 Rf1+ 39. Kg2 Qxe1 40. Qxe1 Rxe1 41. Re7 a5 42. Rb7 Rd1 43. Rxb6 Rxd4 44. Rb5 Rxa4 45. Kf2 Ra1 46. Ke2 a4 47. Kd2 a3 48. Ra5 a2 49. Ke2 Rh1!

A common rook and rook-pawn tactic.

50. Kb2 a1=Q+ 51. Rxa1 Rxa1 52. Kxa1 0-1

Rutherford – Margat

Grinfield Defense

1. d4 Nf6 2. Nf3 g6 3. c4 Bg7 4. Nc3 d5 5. exd5 Nxd5 6. c4 Nxc3 7. bxc3 c5 8. Bc4 O-O 9. Bc3

9. h3 first (to prevent ...Bg4) has also been played.

9...Bg4 10. O-O Nc6 11. e5 Qe7 12. Qe2

After 12. Qe2, White must still respond to ...Bxc3 with gxf3 because of the hanging bishop on e4. 12. Qe2 Bxc3 13. Qxf3? exd4 followed by 14...Nxe5.

12

12...Bxf3 13. gxf3 Rac8

Black calmly builds pressure on the White center.

14. Qe4? exd4 15. exd4 Nxe5! 16. Bb3 Nc6 17. Racl Qd7 18. Rd1 a6 19. Kg2 Na5 20. Bc2 Rd8 21. d5? Rc4 22. Qd3 Rh4 0-1

Best (1697) – Canary (1919)

Queen's Gambit Declined

1. d4 e6 2. c4 d5 3. e3 Nf6 4. Nf3 e6 5. Nc3 Bd6 6. exd5 exd5 7. Bd3 O-O 8. O-O Bg4 9. h3 Bb5 10. Be2 Nbd7 11. b3 Rc8

White has not played very aggressively for this opening. Black is at least equal.

12. Bb2 Qe7 13. Qc2 Bg6 14. Bg4 Ne4 15. Rfcl Rac8 16. Racl a6 17. Nd2 Nxd2 18. Qxd2 Bh4 19. Bxg6 hxg6

White ...hxg6 is the normal type of recapture on g6...fxg6 should be considered here. Black could possibly make use of the f-file.

20. Qd3 Nf6 21. Rd1 Ba5 22. a3 Bc7 23. Qf1 Qd6 24. g3 g5

White has played passively and Black correctly goes on the offensive.

25. Qg2 g6 26. Ne2 Kg7 27. Kf1 Re7 28. Rc2 Rh8 29. Rd3 Rhe8

Black is uncertain how to proceed and shuffles pieces around for a few moves. White cannot do anything but the same.

30. Nc3 Qe6 31. Be1? Rh8

31...Qf5 threatens the rook on d3 along with pinning the f2 pawn. White must either move a rook (which allows ...Rxc3) or he must play 32. Ke2, which is followed by 32...g4 33. h4 c5! 34. dxc5 d4!

32. g4 Ree8 33. Ne2 Rh7 34. Ng1 Reh8 35. f3 Qd6?

Black should not allow 36. e4. After e4, White will break free from the bind he was in.

36. f4? gxf4 37. exf4 Rc8?

Black should first play ...Ne4. With the h3 pawn only attacked once, White should now play 38. Nf3 aiming for either e5 or g5.

38. Re2 Ne4 39. b4 Bb6 40. Qf3

Again Nf3 should be played.

40...f6 41. Rg2 Qe7 42. f5 g5 43. Rc2 Qd6 44. Rd1 Rh8 45. Kg2??

White has blundered. Black gains tempo by threatening mate and also takes over the g3 square.

45...Bc7 46. Kf1 Qg3

46...Ng3+ is more convincing.

47. Rg2 0-1

I do not have the remaining moves if there were any. Black is winning, though.

47...Qxf3+ 48. Nxf3 Rxb3 and so on.

Parli (1537) – King (1285)

Queen's Gambit Declined

1. d4 Nf6 2. c4 e6 3. Nc3 d5 4. Nf3 b6 5. Bg5 Be7 6. e3 Bb7 7. Qc2 Ne4 8. Bxc7 Qxc7 9. exd5 exd5?

A seemingly harmless recapture, however White has a wicked reply in 10. Bb5+. After 10...c6 11. Nxd5 wins, and after 10...Nd7 11. Ba6! also wins. Therefore 10...Kf8 is best. After 10...Nd7 11. Ba6, there follows:

A) 11...Bxa6 12. Nxd5 Qd6 13. Nxc7+ Kd8 14. Nxa6

B) 11...Nxc3 12. Bb7 Rb8 13. Bc6 Ne4 14. Ne5

B1) 14...Nc5 (or Nf6) 15. Bxd7+ Nxd7 16. Nc6

B2) 14...Qb4+ 15. Ke2

Black should first play 9...Nxc3 before recapturing on d5.

I should point out that this was all computer analysis. I could not fault anyone for not seeing the Bb6 move.

10. Bb3 f5

Now that the knight on e4 is guarded, Black can reply to Bb5+ with ...c6.

11. O-O-O O-O 12. h4 Nd7 13. Ng5 h6

13

Black doesn't need to play ...h6 as White's knight isn't causing any problems. 13...c5 or 13...Rac8 should be played.

14. Ngxe4 fxe4 15. Bf1 Rac8 16. g4 c5 17. Bb5 Nf6 18-g5?

White is a bit hasty. Rdg1 first to prevent ...Ng4 is better.

18...Ng4 19. Rdh1 exd4 20. exd4 a6 21. Ba4

21. Be2 is better, but Black still has a large edge.

21...b5 22. Bb3 b4 23. Qe2 Rf3 24. gxf6 bxc3 25. hxg7 exb2+ 26. Kxb2 Qf6 27. Qxe4?? Rxb3+! 0-1

Magar – Roush (2003)

Queen's Indian Defense

1. d4 Nf6 2. c4 e6 3. Nc3 Bb4 4. e3 b6 5. Bd3 Bb7 6. Nf3 Ne4 7. Qc2 f5 8. a3 Bxc3+ 9. bxc3 O-O 10. O-O Na6

Black aims for a standard plan of doubling the c-pawns and pressuring the c4 pawn.

11. Nd2 Nd6 12. f3 e5 13. e4 fxe4 14. fxe4 Rxh1+ 15. Nxf1 e5 16. d5

The center has been closed. While it appears White has lost any attacking chances, he still has a slight edge in development.

16...Qh4 17. Bc3 Ne7 18. Bf2 Qe7 19. Ne3 Ne8

Black attempts to bring his knight towards the defense of his kingside. 19...Rf8 could also be played.

20. Rf1 g6 21. Bg3 Qe5?

White takes over the f-file and Black has little to defend with.

Black must bring another piece to the defense instead of moving the queen.

White's 22. Qf2 guards the knight with tempo.

22. Qf2 Ng7?

White now wins the queen with the following sequence.

23. Bh4 Qf4 24. Qe1! Qh6 25. Ng4 1-0

Canary – Rutherford

Colle System

1. d4 Nf6 2. Nf3 e5 3. e3 b6 4. Bd3 g6 5. O-O Bg7 6. Nbd2 d5 7. e3 O-O 8. Re1 Bh7
- Somewhat of an odd opening system has been played. White can't go on autopilot as in normal Colle lines. Black seems well poised to answer any e4 break as both bishops would hit at the center pawns. 9. e4 exd4 10. exd4 Nxe4 11. Nxe4 dxe4 12. Bxe4 Bxe4 13. Rxe4 e6 looks good for Black.
9. Ne5 Ne4 10. Nf1 Nd7 11. Nxd7 Qxd7
 12. f3 Nf6

An interesting sequence of moves. White moved his knight to e5 only to trade it off two moves later and put the d2 knight on f1. This isn't bad, however, as from g3 the knight will also support e4 while being out of the way of the dark squared bishop should it be ready to move. Black's last move perhaps was not best, since the knight is out of the way of his bishop on d6 instead of f6.

13. Qe2 Rf6 14. f4

White changes directions a bit and decides to stop Black from playing ...e5.

- 14...Ne4 15. Ng3 Nxe3 16. hxg3 e4 17. Bc2 f5

The knights are gone and the h-file is opened. At first glance, it appears Black controls the key squares in the position. White must try to undermine the Black pawns and he attempts to do so starting with the next move.

18. b3 Rec8 19. Kf2?1 exb3 20. Bxb3 Rxc3 21. Bb2 Re7 22. e4

White forces the position open at the cost of a pawn. This looks to be very risky. I doubt that White has sufficient compensation if Black continues with 22...fxe4 23. Qxe4 Kh8. If White plays 24. Qe6, Black trades and plays ...Bc8 and is better. The best is probably 24. Qd3 Rac8.

- 22...e6?1 23. exf5 exf5 24. Rad1

Black has opened the e-file, which only White can use. 24. Qe6 is likely a better move, to activate the rooks deeper into the Black position. 24. Rad1 is not necessary as the pawn is not under serious attack. It appears that maybe his idea was to play Ba3. This doesn't seem to accomplish anything, though, as there is no real possible invasion on e7, and Black can play ...Bf6 or ...Bf8 anyway.

- 24...Bf8 25. Qd2 a5! 26. a3 a4 27. Ba2
28. Bc8 28. Qd3 Re2+
- 28...b5 should also be considered.

29. Re2 Rxe2+ 30. Qxe2 Re8 31. Qf3 Qe6 32. Bb1 Ba6 33. Bd3 Bxd3 34. Qxd3 Bd6 Black is now attempting to form an attack against the king. Ideas of ...g5 fxe5 f4 come to mind.

35. Re1 Kf7?1 36. Rb6 Qe1+ 37. Kf3
 - Re4?1 38. Rxd6 g5 39. fxe5 f4?1
- Instead of playing ...g5 on move 35, Black incorrectly tries to use only the rook and queen to form a mating net. Black could still have forced a draw on moves 38.

38...Re3+ 39. Qxe3+ Qf1 leads to perpetual check. The same idea is possible on move 39.

40. Rf6+ Kg7 41. Rxf4 1-0

Price (1115) - Parfi

King's Indian Attack

1. e4 e6 2. Qe2

This is a relatively new way of leading to a King's Indian Attack. White can place a rook on d1 if Black later trades on e4. The attempt to play ...Ne6-d4 is usually stopped by c3 which gives the option of Na3-c2 with play towards b4 or d4 pawn advances. See Good – Michael, 2006 State Championship for another example of this system.

- 2...c5 3. Nf3 Nc6 4. g3 d6 5. Bg2 g6 6. O-O Bg7 7. Nc3

The position is turning more into a bad (for White) variation of a Closed Sicilian. The knight cannot do much from c3 in this type of position. ...Nd4 could be played now or soon afterwards.

- 7...Nge7 8. d3 O-O 9. Be3 Rb8 10. Rf1
 - e5 11. a3 Be6
- Black calmly develops, but he cannot be stopped from playing ...Nd4, ...b5, etc.
12. Ng5 b5?1

Black should play ...Nd4 now so that he does not have to recapture on e6 with the pawn. The e6 pawn can become a target after White plays Nxe6, Qe4, Bh3, etc. He may not win the pawn, but he will force Black on the defense.

13. Nxe6 fxe6 14. Qd2 Qb6?1 15. Bh3 Nd8
16. Bg5

Another idea is 16. b4 to take advantage of queen's position on the diagonal of his bishop. White can use this pin to exchange on c5, wrecking the pawn structure. White may also be able to pressure the b5 pawn after the exchange on c5.

- 16...Nec6 17. Ne2 Re8 18. Rab1 d5?1

Black tries to gain space on the queenside, but this move allows White to reactivate his pieces to good effect. 19. exd5 exd5 20. Nc3

- d4 21. Ne4

19. f4 exf4 20. exd5 exd5 21. Nxf4 Nd4?

21...Re5! forces White to part with his bishop. Black will now lose the d5 pawn.

22. Bg2 e4 23. Bxd5+ Kh8 24. Kg2

24. Kh1 is a bit safer. There is another square with which to interpose a piece, and no threat of ...Re2+.

- 24...Nf5 25. Nc2?

White loses the initiative with this retreat. Better is 25. Re1.

- 25...Ne6 26. Bxe6 Qxe6 27. Re1 exd3 28. Qxd3 h6 29. Bf4 Rhd8 30. Nc3!

30. Nc3 is an excellent move that takes quite a bit of nerve to play. 30. Qxb5 is hard to

figure out. It appears that White holds after 30. Qxb5 Qe4+ 31. Kh3 (forced because of ...Nd4) Qf3 32. Nc3.

- 30...Qe6+

The endgame after 30...Rxd3 31. Rxe6 Rxxg3+ 32. hxe6 Rxe6 33. Nxb5 g5 34. Bc1 a6 35. Nc3 Bxc3 36. bxc3 Re2+ appears to be drawn, while 34. g4 Nh4+ 35. Kh3 gxh4 36. Ksh4 looks dangerous for White.

31. Qf3 Qxf3+ 32. Kxf3 Nd4+ 33. Ke2
- Rxe1 34. Rxe1 Nxe2
35. Re7 a6 36. Be5 Bxc5 37. Rxc5 1/2-1/2

Canary - Magar

Grünfeld Defense

This was the critical board one match-up of the final round. Canary had not been playing OTB chess for some time before this tournament, but so far he had done well. Now he must play a master in the final round.

1. d4 Nf6 2. e4 g6 3. Nc3 d5 4. exd5 Nxd5
5. d4 Nxc3 6. bxc3 Bg7 7. Qb3 O-O 8. Be4 c5

An unusual queen placement for White has brought this Grünfeld into uncharted territory. An online database search shows 8 games, 7 of which were won by Black. Considering White is already coaxed into playing dxc5 on move 9, I don't

consider this a good system for White. 9. dxc5 Nc6 10. Ne2 Na5 11. Qb4 Nxc4 12. Qxc4 Be6 13. Qb5 a6

Black is pushing White around. The position is soon becoming very dangerous. Taking the pawn just adds to White's troubles by opening the h-file for a Black rook. Black will soon prevent White from castling by ...Be4 and/or ...Qd3.

14. Qb1 Be4 15. Bd2 Qd7

Black calmly adds more fuel to the fire. White is helpless.

16. E3 Rd18 17. Qb2 Rac8 18. Nd4 Rxc5
19. Ne2?

Black now crashes through. 19. Rd1 is the only hope, but after 19...f5 White will be hard pressed to get his king to some sort of safety and not lose a piece in the process.
19...Bxc2 20. Kxc2 Qd3+ 21. Ke1 Rxc3
22. Bxc3 Bxc3+ 23. Qxc3 Qxc3+ 24. Kf2 Rd2+ 25. Kg3 Qe5+ 26. Kf3 Qh5+
0-1

Roush - Sreen
Center Counter Defense
1. e4 g6 2. d4 d5 3. exd5 Qxd5 4. Nf3 Bg7
5. Be2 Nf6 6. e4 Qd8 7. O-O O-O 8. Nc3 Bg4 9. h3 Bxf3 10. Bxf3 e6
The position has reached a sort of Center Counter Defense line. White seems to have his usual slight edge in the opening.

11. Be3 Nbd7 12. Qe2 e5 13. Rd1 Qe7?
14. Rd2

14. d5 should also be considered. If 14...exd5 15. exd5 is strong (15...Nb6 16. Bxb6 followed by d6), and if 14...Rf8 15. dxc6 bxc6 16. Rd2 White maintains the advantage due to the pressure on c6 and d-file. 13. d5 is not as strong as 14. d5 because of the queen's possible recapture on b6.
14. Rd2 Rf8 15. Rd1 e4 16. Be2 Nb6 17. d5

Black does not prevent d5, and White finally decides it is time to play it.
17...exd5 18. exd5 Nf7 19. Qb3
19. d6 is also possible.
19...Nc5 20. Qb5 Bxc3?? 21. Bxc5 Qc7 22. bxc3 Nd7 23. Bd4 a6 24. Qb3 1-0

14th Annual Parkersburg Homecoming Crosstable

PLR#	NAME	ST	PreRate	PsRate	1	2	3	4	TOTAL
1	Thomas	Magar	PA	2200*	2210*	W--6	W--11	W--2	W--3 4.0
2	John	Roush	WV	2003*	2007*	W--7	W--4	L--1	W--6 3.0
3	Robert	Canary	WV	1919*	1931*	W--9	W--5	W--11	L--1 3.0
4	James	Fuller	WV	1727*	1746*	W--8	L--2	W--7	W--5 3.0
5	Reginald	Best	WV	1697*	1684*	W--13	L--3	W--8	L--4 2.0
6	Jerry	Skeen	WV	1687*	1684*	L--1	W--10	W--13	L--2 2.0
7	Markle	Butcher	WV	1626*	1620*	L--2	W--12	L--4	W--10 2.0
8	Katherine	King	WV	1285*	1338*	L--4	W--9	W--5	W--13 2.0
9	Sean	Parl	WV	1537*	1495*	L--3	L--8	D--10	B-- 1.5
10	Mike	Price	WV	1115*	1130*	B--	L--6	D--9	L--7 1.5
11	Dave	Rutherford	OH	1896*	1884*	W--12	L--1	L--3	U-- 1.0
12	Brian	Adams	WV	1396/08	1376/10L--11	L--7	L--7	B--	U-- 1.0
13	James	Fleisher	WV	1172*	1155*	L--5	B--	L--6	L--8 1.0

President's Report
Benjamin Good

Hello everyone! For those of you that are not aware, I am the new president of the WVCA. I'd like to take this time to introduce myself and give a report on going-on in the West Virginia chess scene. My name is Benjamin Good. I grew up in the Charleston area. I've moved around a bit with work, but I've been in Hinton for a while now. I started playing tournament chess as a ninth-grade student in 1991. I became more involved in the WVCA when I took over the webmaster role from Joe Meadows in 2002. I have assisted various people in the WVCA for the last few years, and I look forward to doing what I can as president to promote chess in our state. Some initiatives were discussed at the annual business meeting and I would like to comment on them. It was decided that when we finish our first bulletin that we should attempt to contact various schools in the state and send them a letter or email and a copy of the bulletin. I will be working on compiling a list of schools that we should contact now that the bulletin has been completed. It was also decided that we should attempt to contact previous WVCA members to invite them back to tournament chess. For any of you who may be reading this bulletin, I would like to hear from you! Another initiative that the vice-president Jens Madsen and I are undertaking is the attempt to improve and promote our Grand Prix system. The Grand Prix was a hit when it was first started years ago, and it has now dwindled to near nonexistence. Jens and I are both certified tournament directors and we plan on hosting events in our home cities to increase the number of tournaments held under the Grand Prix system. We are also in discussion about revamping the Grand Prix points system to clear up ambiguity and to more fairly balance the award of bonus points.

As the webmaster, I would also like to speak about the website. Some of you may be unfamiliar with some of the website's features. I expanded on the original design that Joe Meadows created to add some functions that I felt were useful to our visitors. Recently, I have added pages for each of the chess clubs that do not have their own websites. You can see the links to these clubs at the bottom of the page. One of my favorite additions has been the game database.

The game database is linked to the tournament database. When you click on a tournament results page, there will be a link to games that were played in that tournament. You can also search the game database by player name or by tournament name. The games in a search result can also be saved as a PGN file to use with chess database software. Individual games can be viewed by an inline viewer or saved to PGN as well.

For anyone who has comments or questions about the WVCA, you can contact me by email at webmaster@wvchess.org. I look forward to serving you as best I can.

NEXT ISSUE

- Currently I am aiming for publication of the next issue in late May with a third issue to come out in August. To insure consideration for publication, send me the stuff by May 10, 2007. Material received after that point will still be considered if I haven't finished the issue yet, which is always a distinct possibility.
- I plan a salute to Paul Sayre, a stalwart in West Virginia and Huntington chess for many years. Paul passed away in July 2005. I have some material from Tom Bergquist already, but would solicit anecdotes, games, photos, etc. from anyone.
- I plan to publish the minutes from the 2006 business meeting. Please note that this document is unofficial until approved at the next meeting.
JER

West Virginians at the King's Island Open

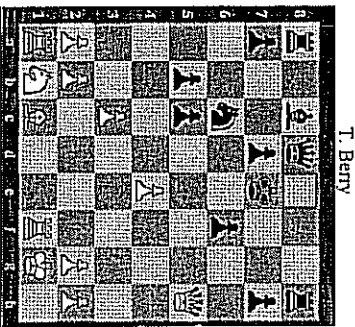
Cincinnati, November 11-12, 2006
By Gary Cummings

The 2006 edition of the King's Island Open saw 303 players with 21 states and the District of Columbia being represented. The contingency from West Virginia consisted of Harold Mitchell, Gary Cummings, Gilbert Stone and Katherine King. Mitchell and Cummings played in the Under 2000 section while Stone and King tested the waters in the Under 1400 section.

Mitchell scored 2.5 out of four played games finishing just out of the money. A dramatic feat as he was under rated by more than a hundred points against every opponent. Cummings scored 1 out of 2 games played. Suffering from the after effects of an 850 mile drive from a TDY in St. Paul, he lost in his first game to one of the eventual first place finishers. After winning a secure but long seventy five move ending in his next game, and then seeing that he had missed an easy game ending opening combination, Cummings decided to withdraw and prepare for his return trip to the already frozen north. He was to add one more variation to his list of Max Lange opening wins.

After the game opening moves of 1. e4 e5
2. Nf3 Nc6 3. Bc4 Bc5 4. O-O Nf6
5. d4 Bxd4 6. Nxd4 Nxd4 7. f4 b5 8.
Bx7 + Kxf7 9. Kxe5 c5 10. c3 Nc6 11.
Qd5 + Ke8 12. exf6 gxf6

13. Qh5 + Ke7 Cummings found himself in this position with white and the move against T. Berry:



T. Berry
G. Cummings

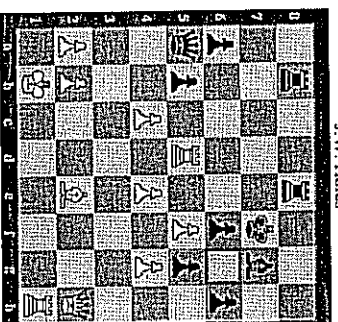
With 14. Rxf6 White wins in a matter of four to five moves. However, the exhausted and problem solving lazy Cummings elected to transition into a three pawn advantage followed by a difficult two hour rook ending. Despite his obvious endurance problems his life long study into this lowly respected opening line allowed him to walk into a win even while sleeping.

In the Under 1400 section the results were most respectable and a degree of honor was returned to our chess weary state. Gilbert Stone was undefeated in five rounds of play with two wins and three draws. This helped him join a group of four for a fourth place tie in the section. He was the only player to put a dent in the score of the first place finisher with one of his draws. Gilbert also

defeated one of the second place finishers. He was one of only two players to be undefeated in five played rounds in the section.

The other West Virginia player was Katherine King. She also joined the tie for third place in the section with a 3-1 score in four played games and a last round half point bye. School the next day prevented her from being able to stay for the finish.

She defeated three fifty plus year old men with little respect and absolutely no mercy but stumbled and lost a time scramble against an "adorable" ten year old Wei Huang. Her last round game was one that deserves notice. She survived a treacherous opening and early middle game with nothing but attack in her program. Her continued pressure to open lines resulted in a presumed blockaded position where the once powerful dragon bishop had become little more than a backward pawn. This led to other weak squares and her training in how to recognize and make use of weak squares in attack was about to pay off. The persistence in presenting her opponent with multiple problems during the execution of her attack at last lead to the arrival of the following position:



J.W. Holts
K. King

The finish was swift as King cashed in her chips with the moves 25. Rd7 + Kg8 (if Kf8 then 26. Qd6 + wins easily) 26. Qh5. We were robbed of the picturesque finish when her opponent thought for 15 minutes and resigned. The end would have been 26., Kf8 27. Qg6 Rg8 28. Qxh6 + and mate the next.

Both Stone and King pocketed \$87 each for their performance.
The King's Island Open, with time controls conducive to true creative effort, offers a nice showcase event for West Virginia players. The 2006 edition, though poorly attended, was still equal to previous significant showings by WV players thanks to the efforts of Mitchell, King and Stone.

Thanks a bunch!

I wish to thank the various contributors to this issue, particularly Ben Good who authored several pieces. I also appreciate the fine articles prepared by Jens Madsen and Gary Cummings. Without their assistance, this issue would have been delayed even further and would have been less rich in content. All games, photos, and cross tables are from the WVCA website, except those contained in the articles by Mr. Good, Mr. Madsen, and Mr. Cummings.
John Roush, Editor.

WEST VIRGINIA CHESS ASSOCIATION

FINANCIAL STATEMENT September 1, 2005 to August 31, 2006

TOTAL PREVIOUS FUNDS AVAILABLE September 1, 2005 \$1403.37

RECEIPTS

WVCA Dues Regular	\$250.00
*USCF Amateur South Expenses Returned	400.00
Interest	<u>2.06</u>
	652.06

TOTAL PREVIOUS FUNDS AND RECEIPTS AVAILABLE \$2055.43

DISBURSEMENTS

WVCA Bulletin Expense	94.98
2006 USCF Affiliate Fee	40.00
Secretary-Treasurer Expense	28.16
Website Expense	205.00
2006 WV License Tax	<u>25.00</u>
	393.14

TOTAL PRESENT FUNDS AVAILABLE August 31, 2006 \$1662.29

RECONCILIATION


United National Bank Savings Account (per Bank Statement)	
Life Memberships on Deposit (Four)	\$560.00
Operating Cash on Deposit	<u>702.29</u>
*Funds Held by Charleston Chess Club-Chuck Waugh	<u>400.00</u>
Total Reconciliation	<u>\$1662.29</u>

CHANGES IN PRESENT FUNDS AVAILABLE FROM PREVIOUS STATEMENT

Life Memberships (Four)	No Change	\$ 0.00
Operating Cash	Decrease	141.08
*Funds Held by Charleston Chess Club-Chuck Waugh	Increase	<u>400.00</u>
Net Change (Increase) in Funds Presently Available		<u>\$258.92</u>

* Amounts Being Held as per Motion Passed by Membership at 2005 Business Meeting

Respectfully Submitted,


Thomas O. Bergquist
Secretary-Treasurer

Tactics Corner Answers

- 1) 1. Qa17+ Kc17 2. R14# This is in response to the move ... Rd377 which was not played in the game. Black won after ... Rd1 instead of ... Rd3.
- 2) 1... Rb374 wins the queen.
- 3) The Intermexxa 1. Bx45+ wins a piece.
- 4) While he has a great position, but can put the game away with 1. Qa11 which wins the queen after 1... Q16 2. Ng4.
- 5) 1... Qxd1+ 2. Qxd1 e2+
- 6) Black has fallen into a trap of sorts. 1. Bx7+1 Kx7 2. Qb3+ e8 1. Qx7 wins material.
- 7) While saw the beginning: 1. Bg7+ Kg8 2. Bx16+ K10 3. Bg7+ Kg8 4. Bx65+ K10, but missed the follow up 5. B141 threatening B16#.
- 8) Black could have finished White off with 1... b4! Black wins easily in the case of 2. Rb3 bxc3 3. Rxc3 Qxc3 4. Nxd8 Qd4+ 5. Kc1 Kx4. The other continuation is 2. cxb4 Bc4 when 3. Nxd8 R13 wins and 3. Nc7+ K10 4. Rd5 Bc2+ 5. Kc1 Bx51 6. Kd1 Qx2+ 7. Kc1 Bx4 also wins.
- 9) Black missed the correct continuation: 1... Rax7! 2. Qax7 Qax7 3. Rax7 Bb6+ winning a piece. Black played 1... N1a and after 2. Qx377 he then took the bishop 2... Rax7! and won.
- 10) The "cute" move 1. Qc4! wins a piece: 1... Qxc4 2. Bx65+
- 11) While can already win an exchange, but goes for more with 1. Ng5 Qc8 2. Qc4! threatening mate and the rook.
- 12) While missed the crushing 1. Rxd1! which threatens mate on f7 and a discovery on the queen. After 1... Rg5 2. Rxd3, White will win material as the c3 rook cannot leave the defense of the queen. Another possibility is 1... Nf6 5. R. Rxd6!