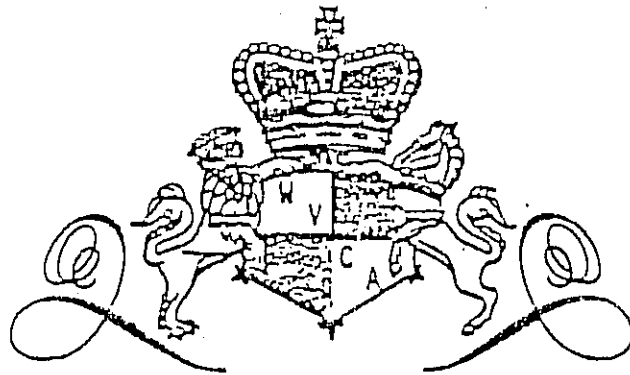


*West Virginia
Chess
Bulletin*



*Vol. # 204
Winter 1990-1*

Published By
West Virginia Chess Association

Greetings,

Welcome to my last edition of the Bulletin for this term. The next two issues will be compiled by John Roush. Materials should be forwarded to John at: 215-A Roane St. Charleston, WV 25302.

The annual state championships will be held at Lewis County High School this Labor Day weekend. (See ad on page 18) The state scholastic is also being contested in Lewis County, at Jackson's Mill this April. The new state postal champion is a native of Lewis County. Certainly a red letter year for Lewis County chess.

Special thanks for information goes to Michael Anders, Michael Baker, Markle Butcher, Thomas Bergquist, J Franklin Campbell, Donald Griffith, Richard Weiss, and Max Zavanelli.

This issue is only 18 pages long. This is to help offset the recent postal increases.

My comments on games are as usual, questionable at best. That is the price you pay for having annotations by a A/B player. However, the remainder of the Bulletin information has been factual. The pen may be mightier than the sword, but it is also more fun!

It is with a heavy heart that I must announce temporary retirement from OTB events. This year I've started officiated high school basketball during the winter, skied in Austria, and have applied for a fall coaching position. As you can see this leaves little time for study and tournaments. Only my mailbox will continue to be active in chess.

Until states. Gut Schach, Viel Gesund, und Auf Wiedersehen!

Herr Terry J Riley

TABLE OF CONTENTS:

Editor's page	p. 1
Fairmont Club Championship 90	p. 2-4
Eastern Panhandle News	p. 5
Capitol Open	p. 6-10
Postal News	p. 11
Postal Guide	p. 12-16
Top 25	p. 17
State Champ Ad	p. 18

Fairmont State College Chess Club Championship 1990

Summer/Fall 1990

Fairmont, WV

TD- L. Iorio

The Fairmont State College (FSC) Chess Club is once again on its' feet. This editor for one is glad to see a once prosperous club being kept alive. (Glowings from a Past President.)

This version appears to have both students and members of the community participating. This club has absorbed the Marion County Chess Association.

Winning the round robin event was Mark Bordenet with 8 points. Finishing second with 7 points was Robbie Maier.

The time control was 40/1 which may account for the many mistakes found in the games. Following are some games and the crosstable.

PLAYER	1	2	3	4	5	6	7	8	9	10	TOTAL
1. Bordenet, Mark	X	1	W	1	0	1	1	1	1	W	8
2. Maier, Robert	0	X	0	1	1	1	1	1	1	W	7
3. Cady, Danny	F	1	X	0	0	1	1	1	1	1	6
4. Holsberry, Richard	0	0	1	X	1	.5	1	.5	1	1	6
5. Iorio, David	1	0	1	0	X	0	.5	1	1	1	5.5
6. Butcher, Markle	0	0	0	.5	1	X	0	1	1	W	4.5
7. Deleruyelle, Greg	0	0	0	0	.5	1	X	.5	.5	W	3.5
8. Baker, Michael	0	0	0	.5	0	0	.5	X	1	W	3
9. Iorio, Lawrence	0	0	0	0	0	0	.5	0	X	W	1.5
10. Criss, Robert	F	F	0	0	0	F	F	F	F	X	0

W = Forfeit Win F = Forfeit Loss

MARK BORDENET B - LAWRENCE IORIO C SICILIAN Closed B23

1. e4 c5 2. Nc3 Nc6 3. f4 d6 4. Nf3 g6 5. Bb5 Bd7 6. O-O Bg7
 7. Bc6 7. d3 is better here. This must be a Fairmont thing, as this move is repeated by others. 7...Bc6 8. d4 cd4 9. Ne2 Must be afraid of 9. Nd4 Qb6. 9...Be4 10. Ned4 a6 11. Re1 Bd5 12. c3 Nf6 13. f5 b5 14. fg6 hg6 15. Ng5 Rc8 16. Ndf3 Bb7 17. Bf4 Kf8 18. Nd4 Nh5? 19. Nde6+! Kg8 20. Nd8 Rd8 21. Qd2 e5 22. Be5 Be5 23. Re5 Kg7 24. Re3 Nf6 25. Rf1 Rh5 26. Qd4 Kh6 27. Nf7+ Kh7 28. Nd8 Ba8 29. Qf6 Kh6 30. Nf7+ Kh7 31. Qh8++ 1-0

MARKLE BUTCHER B - MARK BORDENET B SICILIAN Richter-Rauzer B54

1. e4 c5 2. Nf3 d6 3. d4 cd4 4. Nd4 Nc6 5. Bb5 Bd7 6. Nc3 g6
 7. O-O Bg7 8. Be3 Nf6 9. Qd2 Ng4 10. Bc6 bc6 11. f3 Ne3 White has given up the bishop pair. He will be advised to keep the position closed. 12. Qe3 Qb6 13. Rfd1 e5 14. Na4? Hanging the second knight out to dry. 14...Qb4 15. Qb3 c5 16. Qb4 cb4 17. Nb3 Ba4 18. Rd6 O-O 19. Rad1 Rfc8 20. Na1 Bc2 21. Nc2 Rc2 22. R6d2 Rac8 23. Kf1 Bh6 24. Rd8+ Rd8 25. Rd8+ Kg7 26. Rd7 Rb2 27. Ra7 Be3! 28. Ra5 Bd4 29. Ra4 Rf2+ 30. Ke1 Rg2 31. Kd1 Rh2 32. Rb4 Ra2 33. Rb3 h5 34. Rd3 h4 35. Ke1 g5 36. Kf1 Kg6 37. Rb3 h3 38. f4 Ra1+ 39. Ke2 h2 40. f5+ Kf6 41. Kd3 h1 (Q) 42. Kc4 Qc1+ 43. Kd3 Qd1+ 44. Kc4 Ra4+ 45. Rb4 Rb4 46. Kb4 Qc2 47. Kb5 Qc5+ 48. Ka4 Qb6 0-1

DAVID IORIO B - ROBERT MAIER B SICILIAN Richter-Rauzer B56

1. e4 c5 2. Nf3 d6 3. d4 cd4 4. Nd4 Nf6 5. Nc3 Nc6 6. Bb5 Bd7
7. Nc6 Bc6 8. Bc6+ bc6 9. Be3 g6 10. O-O Bg7 11. Qd2 O-O 12. Bh6 Bh6
13. Qh6 Rb8 14. b3 Qa5 15. Qe3 Rfc8 16. Ne2 c5 17. c4 Qd8 18. Rfd1 a5
19. f3 a4 20. e5 Ne8 21. ed6 ed6 22. Nf4 Rb7 23. Nd3 Re7 24. Qf2 Qc7
25. ba4? Just plain bad. This is the down side of action chess. In
the heat of the moment one often makes elementary mistakes. 25...Qa5
26. Nb2 Rb8 27. Qd2 Qd2 28. Rd2 Reb7 29. Re1 Nf6 30. Ree2 Kg7 31. Kf2
Nh5 32. g3 Nf6 33. Nd1 Rb4 34. Rb2 Nd7 35. Rb4 Rb4 36. Nb2 Nb6 37. Rc2
Na4 38. a3? Rb2 39. Rb2 Nb2 40. Ke3 Nc4+ 0-1

MICHAEL BAKER B - ROBERT MAIER B SICILIAN B56

1. e4 c5 2. Nf3 d6 3. d4 cd4 4. Nd4 Nf6 5. Nc3 Nc6 6. Nc6 bc6
7. e5 de5 8. Qd8+ Kd8 9. Bg5 Be6 10. Bf6 ef6 11. O-O-O+ Kc7 12. g3 Bb4
13. Na4 Rhd8 Be2 Rd1+ 15. Rd1 Rd8 16. Rd8 Kd8 17. a3 Be1 18. f3 Bf2
19. g4 f5 20. h3 fg4 21. fg4 Black now has the passer. The bishop
pair will keep white's king from wandering. White needs to attack
those weak queenside pawns. 21...h5 22. Kd2 hg4 23. hg4 g6 24. Nc3 f5
25. Nd1 Bb6 26. gf5 gf5 Two connected passed pawns. These will win
even in time trouble. 27. Ne3 Ke7 28. Nc4 Bc7 29. b4 e4 30. Ke3 Bd5
31. Kd4 Ke6 32. a4 Bh2 33. Ke3 f4+ 34. Kf2 Bg3+ 35. Kg1 f3 36. Bf1 Kf5
37. Ne3+ Kf4 38. Nd5+ cd5 39. c4 d4 40. c5 d3 41. c6 d2 0-1

MARK BORDENET B - DAVID IORIO B SCOTCH C45

1. e4 e5 2. Nf3 Nc6 3. d4 ed4 4. Nd4 Be7 More usual is 4...Nf6.
5. Nc6 dc6?! 5...bc6 is to be played here. 6. Qd8+ Bd8 7. Bd3 Be7
8. O-O Be6 9. Be3 Nf6 10. f3 O-O 11. Nc3 Nd7 12. Rfe1 Bc5 13. f4 Be3+?
Trades away a strong developed piece, while aiding white in doubling
rooks. 14. Re3 f6 15. Ne2 Nc5 16. Nd4 Bf7 17. Nf5 Rfe8 18. Rael Rad8
19. b3 a5 20. a4? Giving up a pawn, while allowing the queenside pawn
structure to be smashed. 20...Bb3! 21. Rg3 g6 22. h4 Nd3 23. cd3 Kf8
24. Nh6 Ba4 25. h5 Bb3 26. hg6 hg6 27. Rg6 Rd6 28. Rg8+? 0-1 28...Bg8

DANNY CADY A - MICHAEL BAKER B PETROV C43

1. e4 e5 2. Nf3 Nf6 3. d4! ed4 4. e5 Qe7 Better is 4...Ne4.
5. Bc4 Qb4+ 6. Nbd2 Ne4 A rather pre-mature attack considering
black's development. Out of six moves two were pawns, two queen, and
two with the same knight! 7. O-O Nd2 8. Nd2 Be7 9. f4 d6 10. Kh1 Bd7
11. a3 Qb6 12. Qh5 g6 13. Qe2 Nc6 14. b4 de5 15. Bb5 O-O-O? Ignoring
the threats on the queen. 16. Nc4! Qb5 17. Nd6+ Bd6 18. Qb5 Nb4
19. Qe2 Nc6 White gains the queen for two pieces and three pawns.
20. Rb1 ef4 21. Bf4 Ba3 22. Qb5 Bb4 23. Rb4 Nb4 24. Qb4 Be6 25. Rb1 b6
26. Be5 Rhe8 27. Qa4 Bf5 28. Bf6 Bc2 29. Qc2 d3 30. Qc3 Rd7 31. h3 d2
32. Rd1 Re2 33. Bg5 Kb8 34. Rd2 Re1+ 35. Kh2 Rd2 36. Qd2 Re6 37. Bf4
Kb7 38. Qd7 Rc6 39. Qf7 h5 40. Qd5 a5 41. Be3 a4 42. Kg3 a3 43. Bd4 a2
44. Kh2 g5 45. Qa2 Rd6 46. Be3 g4 47. hg4 hg4 48. Bf4 Rg6 49. Qf7 g3+
50. Bg3 Rg3 51. Kg3 b5 52. Kf3 Kb6 53. Ke3 c5 54. Kd3 Ka5 55. Qd5 Kb4
56. Qd6 1-0

LAWRENCE IORIO C - ROBERT MAIER B INDIAN A45

1. d4 Nf6 2. e3 As the commercial says "Why ask why?" 2...b6
 3. Bd3 Bb7 4. Nd2? This would be bad even for five minute chess.
 4...Bg2 5. f3 e6 6. Ne2 Bh1 7. Kf2 Bf3 8. Nf3 Ng4+ 9. Ke1 Be7 10. Kd2
Bg5 11. Ng5 Qg5 12. Qg1 h6 13. c3 Nf6 14. Qf2 d5 15. Ng3 O-O 16. Kc2
Nfd7 17. e4 Qe7 18. Qg2 g5 19. h4 f6 20. Bd2 a5 21. Rg1 c5 22. ed5 Ra7
 23. de6 Qe6 24. Bf5 Qf7 25. hg5 fg5 26. Qh3 Qg7 27. Rh1 Nf6 28. Qh6
Qh6 29. Rh6 Nh7 30. Be6+ Kg7 31. Bg5 Ng5 32. Rh5 Ne6 0-1

MARKLE BUTCHER B - RICHARD HOLSBERRY B KING'S INDIAN DEFENSE B61

1. d4 Nf6 2. c4 g6 3. Nc3 c5 4. Nf3 Bg7 5. e3 O-O 6. Bd3 6. dc5
 lead to +-. 6...Nc6 6...cd4 is better here. 7. d5 Nb4 8. e4 Nd3
 9. Qd3 d6 10. O-O a6 11. Bd2 Rb8 12. a4 Bd7 13. Ra2 Qc7 14. Rb1 Rfc8
 15. h3 Kf8 16. Re1 Kg8 17. Bf4 Nb5 18. Bh2 Rf8 19. g4 Nf6 20. e5 Ne8
 21. ed6 ed6 22. Nd2 f5 23. g5 h6 24. h4 Qd8 25. Bf4 hg5 26. hg5 b5
 27. Qe2 Bc3 28. bc3 ba4 29. Qe7 Qe7 30. Re7 Rf7 31. Rf7 Kf7 32. Kg2
Rb6 33. Kf3 Ng7 34. Ke2 Nh5 35. Bh2 Ke7 36. f4 Kf7 37. Kd3 Ke7 38. Kc2
Rb8 39. Rb2 Rb2 40. Kb2 Kd8 5/5

RICHARD HOLSBERRY B - DAVID IORIO B ENGLISH A20

1. c4 e5 2. g3 Nf6 3. Bg2 d5 4. cd5 Nd5 5. Qb3 Nb6 6. Qb5+ Nbd7
 6...Bd7? 7. Qe5 7. Nc3 c6 8. Qb3 Nc5 9. Qc2 Be6 10. Nf3 f6 11. O-O
Qd6 12. b3 Qd7 13. Ba3 Nb3 Black literally throws away the knight.
 14. ab3 Ba3 15. Ra3 O-O 16. d3 Rfd8 17. Raa1 Nd5 18. Nd5 cd5 19. d4 e4
 20. Nd2 Rac8 21. Qb2 a6 22. Rac1 Qb5 23. e3 Rc1 24. Rc1 Rc8 25. Rc8+
Bc8 26. Qc2 Bd7 27. Qc7 Qc6 28. Qc6 Bc6 29. f3 f5 30. Kf2 Kf7 31. h3
h5 32. g4 hg4 33. hg4 g6? 34. fe4 de4 35. gf5 gf5 36. Bf1 b5 37. Kg3
Kf6 38. Kf4 a5 39. Be2 Bd7 40. Bd1 Bc6 41. Bc2 Bd5 42. Nb1 Bc6 43. Nc3
Bd7 44. Bd1 Be8 45. Nd5+ 1-0 45...Kg6 46. Ne7+ Kf6 47. Nf5.

LAWRENCE IORIO C - GREG DELERUYELLE D INDIAN A45

1. d4 Nf6 2. e3 e6 3. Bd3 d5 4. Nd2 c5 5. c3 cd4 6. cd4 Bb4 7. f4
Qa5 8. Nf3 Qb6 9. O-O Bd2? Throwing away the developed good bishop.
 10. Qd2 Nc6 11. Ne5 Nb4 12. Bb1 Bd7 13. a4 Nc6 14. Rf3 Ne5 15. fe5 Ne4
 16. Be4 de4 17. Rh3 Qa6 18. b3 f5 19. ef6 e.p. O-O 20. Ba3 20. fg7?
Rf1++ 20...Rf6 21. Qd1 h6 22. Qg4 Bc6 23. Bb2 Bd5! A good blockader.
 24. Rg3 Rf7 25. b4 Qc4 26. Ba3 Qc3 27. Qd1? Hanging a pawn. 27...Bb3
 28. Rc1 Bd1 29. Rc3 Ba4 30. Rg4 Bb5 31. h3 31. Re4? Rf1++ 31...Bc6
 32. Kh2 Bd5 33. Rc1 b6 34. Rc3 g5 35. h4 Rg7 36. hg4 hg4 37. Rc1 Rh7+
 38. Kg1 Rg7 39. Rc3 Rd8 40. Rc1 Rdd7 41. Rc8+ Kf7 42. Rh8 Kg6 43. Rb3
Kf5 44. Rgg3 Rh7 45. Kf2 Rh3 46. Rh3 Kg4 47. Rg3+ Kh4 48. Rh3+ Kg4
 49. Rh1 Rc7 50. Rc1 Rc1 51. Bc1 Bc4 52. Bd2 5/5

Upcoming Fairmont Tournament:

April 6 & 7. Twin Tornadoes. These are two one-day events. TC 40/1
 EF \$10 The prize fund is based on 25
 See Chess Life for more details and addresses. players. 1st \$45 2nd \$30 Class prizes
 based on percentage of participants.

All Quiet on the Western Front

January 13, 1991

St. James, Md

TD - M. Anders

The Eastern Panhandle Chess Association of West Virginia has for all intense purposes merged with the St. James club of Washington County Maryland.

This event was won by master David Sherman of Maryland. Second place was shared by Dr. Stephen Mallott of Martinsburg, WV and Blaine Dockery of the St. James club.

Steve has accumulated a record of 8-3-1. This has allowed him to place in the top 25 of West Virginia. His only losses have been to two out-of-state masters and this editor.

This event was to be a team swiss event. The Eastern Panhandle would have fielded a strong team with Mallott, Riley, Burkhardt, and Housum. This team fell apart the morning of the event due to events beyond our control. Unfortunately the poor weather deterred many entrants. The event was changed to a standard swiss.

There were a total of four West Virginia players in this field of 13 players. Unfortunately there are not any complete games to share.

1. Sherman, David		2245	W6	W9	W2	W3	4
2. Mallott, Stephen	WV	1815	W10	W4	L1	W6	3
3. Dockery, Blaine		1808	W12	W11	W8	L1	3
4. Anders, Michael		1670	W5	L2	W10	D8	2.5
5. Keppel, Michael		1111	L4	D7	W12	W11	2.5
6. Willard, Gene		1615	L1	W12	W9	L2	2
7. Van Raub, Alfred	PA	1475	D5	L8	W11	D13	2
8. Starner, Al		1811	L11	W7	L3	D4	1.5
9. Burkhardt, Robert	WV	1677	W13	L1	L6	D10	1.5
10. Housum, Wayne	WV	----	L2	W13	L4	D9	1.5
11. Madans, Mira		1508	W8	L3	L7	L5	1
12. Shaughnessey, Ed		1300	L3	L6	L5	W13	1
13. Lopez, Steve	WV	1114	L9	L10	L12	D7	.5

EASTERN PANHANDLE DELIQUENT LIST

It is another sad day in West Virginia that such a list must appear. The USCF has a list of players it has revoked memberships from for various infractions.

This is a similiar idea. I can not revoke memberships, but I can bar players from competing in tournaments I direct. You can help by also banning these players from your events.

1. James Stretch Martinsburg Owes \$5.00 for unpaid USCF dues.
2. Randy Bierce Moundsville Owes prize money \$40.00 + interest.

Terry Riley Pres. Eastern Panhandle Chess Assn.

Capitol Open

January 19-20, 1991

Charleston, WV

TD - D. Griffith

The Capitol Open has once again come and gone. This year's event was played in Charleston proper, with a total of 16 combatants.

The tournament was won by Gary Hardin with 4.5 points. Mark Hathaway was close behind with 4 points. Five players tied for a distant third place with 3 points each.

		1	2	3	4	5	TOTAL	
1.	Griffith, Donald	2124	W8	W4	W3	L5	L2	3
2.	Hathaway, Mark	2123	W9	D5	BYE	W6	W1	4 ;
3.	Walker, James	2117	W10	W6	L1	L7	U-	2
4.	Haas, David	2097	W11	L1	W16	U-	U-	2
5.	Hardin, Gary	2041	W12	D2	W7	W1	W9	4.5
6.	Chaffin, Barry	1998	W13	L3	W11	L2	W7	3
7.	Skeen, Jerry	1818	W14	W15	L5	W3	L6	3
8.	Canary, Robert	1748	L1	D16	D15	W11	W13	3
9.	Morris, Gary	1664	L2	W12	WF	D15	L5	2.5
10.	McLear, Robert	1470	L3	W13	LF	U-	U-	1
11.	Miller, Galen	1405	L4	W14	L6	L8	D16	1.5
12.	Rhodes, Samuel	1338	L5	L9	BYE	W13	W14	3
13.	Watkins, Joe	UNR	L6	L10	L14	L12	L8	0
14.	Gentry, Charles	UNR	L7	L11	W13	L16	L12	1
15.	Ellis, Sefus	1708	HB	L7	D8	D9	U-	1.5
16.	Iorio, Lawrence	1464	HB	D8	L4	W14	D11	2.5

MARK HATHAWAY CM - GARY MORRIS B SICILIAN Modern Paulsen B81

1. e4 c5 2. Nf3 e6 3. d4 cd4 4. Nd4 Nf6 5. Nc3 d6 6. g4 h6 7. Rg1 Be7 7...Nc6 is better here. 8. Be3 d5 9...a6 would have returned black to a good line. 9. Bb5+ Kf8 10. ed5 Nd5 11. Nd5 Qd5 12. Qe2 a6 13. Bc4 Qa5+ 14. c3 b5 15. Be6! Winning the pawn. 15...fe6 loses the rook to 16. Qf3+, as would 16. Be6 Ne6 17. fe6 Qf3+ 15...Bb7 16. Bb3 b4? Opening the door for the fatal stab. 17. Qc4 Ke8 18. Qf7+ Kd7. 19. 0-0-0 bc3 20. Nb5+ Kc8 21. Qe6+ 1-0

BOB McLEAR C - JIM WALKER CM SICILIAN Closed B20

1. e4 c5 2. Bc4 Rather unusual. 2...e6 3. Nc3 Signaling a closed game. If you want positional why play e4 at all? 3...a6 4. a3 b5 5. Ba2 Bb7 6. d3 Nf6 7. Bg5 d6 8. Nf3 Be7 9. 0-0 0-0 10. Qd2 Nbd7 11. Rael Qc7 12. Ne2 Rfe8 13. Ng3 Rac8 14. Re2 c4 15. Qf4 This just feels bad. The queen is bound to get bounced. 15. dc4 isn't that bad. 15...Ne5 16. Ne5 de5 17. Qh4 cd3 18. cd3 Qd8 19. Nh5? Simply hanging a pawn and helps black to simplify his lead. 19...Nh5 20. Be7 Re7 21. Qh5 Qd3 22. Re3 Qd4 23. Rh3? Throws away another pawn for a hopeless mate threat. 23...Qe4 Stops the threat, eats the pawn, and threatens mate in one. 24. Qg5 Qg6 25. Qg6 hg6 These pawns look ugly, but will become an unstoppable pawn roller. 26. b4 Rd7 27. Re3 e4 28. Bb1 f5 29. h3 Kf7 30. g3 Rdc7 31. Rd1 Ke7 32. Kh2 Rc1 33. Rc1 Rc1 34. Ba2 Rc2 35. Bb1 Rf2+ 36. Kg1 Rf3 37. Rf3 ef3 38. Kf2 Kf6 39. Ke3 e5 40. Bc2 e4 41. Bd1 g5 42. Kf2 f4 43. g4 e3+ 44. Ke1 f2+ 0-1

CAPITOL OPEN CONT'D

ROBERT CANARY B - DONALD GRIFFITH CM GRUNFELD e3 Variation D96

1. d4 d5 2. Nf3 Nf6 3. e3 g6 Now that 4. Bf4 is not possible (Grunfeld Gambit) black transposes to the Grunfeld. 4. c4 Bg7 5. Nc3 O-O 6. Qb3 c6 7. Be2? More usual is 7. cd5. Horowitz does give 7. Bd2 dc4 8. Bc4. This would have saved the pawn later. 7...dc4 8. Bc4 Pointing out the weakness of 7. Be2. The same bishop is moved twice consecutively. 8...Nbd7 9. Ng5 Qe8 10. Nce4 Ne4 11. Ne4 Nb6 12. Be2 e5 13. Nd6 Qe7 14. Nc8 Rac8 And white has the bishop pair. As any well versed B Class player knows this is a goal usually worthy of attaining. However, in this case it is overwhelmed by black's superior development. 15. Bd2?! White needed this much earlier. It now comes one move too late. 15. de5 would have unleashed the dark bishop, but would have saved the pawn. 15...ed4 16. O-O c5 17. Rac1 Rfd8 18. Bg4 Rc7 19. Ba5 Rc6 20. ed4 Bd4 21. Bc3 Nd5 22. Bd4? This gives black the passed pawn which white will choke on. 22...cd4 23. Qa4 Rc1 24. Rc1 Nf4 25. Qc4 Qg5 26. Bf3 d3 27. h4 Hoping for 27...Qh4 28. g3 to win the knight. This fails to the knight check. 27...Qh4 28. g3 Ne2+ 29. Be2 Qc4 0-1

JIM WALKER CM - BARRY CHAFFIN A SICILIAN Leonhard-/Sozin B89

1. e4 c5 2. Nf3 Nc6 3. d4 cd4 4. Nd4 Nf6 5. Nc3 d6 6. Bc4 e6 7. Be3 Be7 8. Qe2 O-O 9. O-O-O a6 10. g4 Signaling the charge a little early. The player who retreats or breaks off the attack to defend first will lose. 10...Nd4 11. Bd4 11. Rd4 is just as good. White reserves the rook for active duty on the d, f, or g-file. 11...Ne8 12. f4 b5 13. Bb3 Bb7 14. Rhg1 Qc7 15. g5 b4 16. Na4 e5 17. Bf2 17. Be3 loses the e-pawn. In this all out assault a pawn will not carry the day. 17...ef4 18. Kb1 Kh8 19. Nb6 Rb8 20. h4 f6 21. Bd5 fg5 22. hg5 f3 23. Qd2 Qd8 24. Be3 a5 25. g6 Nf6 26. Rh1 Bd5 27. Nd5 Ne4 28. Rh7+ Kg8 29. Ne7+ Qe7 30. Rdh1 Nd2+ 31. Bd2 1-0

DAVID HAAS CM - LAWRENCE IORIO C RUY LOPEZ Moller C78

1. e4 e5 2. Nf3 Nc6 3. Bb5 a6 4. Ba4 Nf6 5. O-O Bc5 6. c3 Ne4 7. Bc6 More usual are 7. d4 and 7. Qe2. 7...dc6 8. Ne5 Bf2+? It is a mistake to trade two pieces for a rook and pawn. The point count is equal but the two pieces are stronger. 9. Rf2 Nf2 10. Kf2 Qf6+ 11. Nf3 Bg4 12. Qe2+ Kf8 13. b3 Bf3? Releasing all the tension and danger from the position. Black needs to keep the pressure on with 13...Re8. 14. Qf3 Qf3 15. gf3 Re8 Too late now. Move fifteen and already in the endgame. The two pieces will now show their superiority. 16. d4 f5 17. Bf4 Re7 18. Nd2 Ke8 19. Nc4 Kd7 20. Rg1 Rhe8 21. Be5 Rg8 22. Bf6 Ree8 22...Rf7? would allow 23. Ne5+ fork. 23. Bg7 Kc8 24. Be5 Rg1 25. Kg1 Rg8+ 26. Kf2 Rg6 27. Ne3 Rg5 28. h4 Rh5 29. Kg3 Kd7 30. Bf6 Rh6 31. Bg5 Re6 32. h5 h6 33. Bf4 Rf6 34. Be5 Rf7 35. Kf4 Ke6 36. Ng2 Rf8 37. Bc7 Rg8 38. Ne3 Rg5 39. c4 Rh5 40. d5+ cd5 41. cd5+ Kd7 42. Be5 Rh1 43. Kf5 Rg1 44. Nc4 h5 45. Nb6+ Ke8 46. d6 Rd1 47. d7+ Rd7 48. Nd7 Kd7 49. Kg5 Ke6 50. f4 h4 51. Kh4 Kf5 52. a4 b6 53. b4 b5 54. ab5 ab5 55. Kh5 Ke6 56. Kg6 Kd5 57. Bb8 Kc4 58. Bd6 Kd5 59. Bc5 Kc6 60. f5 Kb7 61. f6 Kc6 62. f7 Kb7 63. f8(Q) Kc6 64. Qd6+ Kb7 65. Qb6+ Ka8 66. Qa7++ 1-0

GARY HARDIN CM - MARK HATHAWAY CM SICILIAN Najdorf B95

1. e4 c5 2. Nf3 d6 3. d4 cd4 4. Nd4 Nf6 5. Nc3 a6 6. Bg5 e6 7. Bc4 Nbd7 ECO gives 7...b5. 8. O-O b5 9. Be6!? So much for the meek 9. Bb3. 9...fe6 10. Ne6 Qb6 11. Re1 White has given up a piece for two pawns and a dangerous attack. Black's king is rather vulnerable looking. 11...Kf7 12. Nd5 Qb8 13. Nd8+ Ke8 14. Ne6 Ra7 15. e5 de5 16. Bf6 Nf6 17. Ndc7+ Kf7 18. Nd8+ Kg6 19. Qd3+ Bf5 20. Qg3+ Ng4 21. Nce6 Qb6 22. Re5 Qf2+! Black gives back the piece to defuse white's kinghunt. 23. Qf2 Nf2 24. Kf2 Rd7 25. g4 Bc2 26. Ke3 h6 27. Nf8+ Rf8 28. Ne6 Re8 29. Nf4+ Kf7 30. Re8 Ke8 31. Rcl Bd1 32. h3 Rd6 33. Ke4 Kd7 34. Nd5 Bf3+! 5/5 Black forces the exchange, into the very drawish rook endgame. This was the only game Gary did not win.

JIM WALKER CM - DONALD GRIFFITH CM SICILIAN Closed B26

1. e4 c5 2. Nc3 d6 3. g3 g6 4. Bg2 Bg7 5. d3 Nc6 6. Nf3 e5 7. O-O Nge7 8. Be3 O-O 9. Qd2 Nd4 10. Ne2 f5 11. Nfd4 cd4 12. Bh6 Qc7 13. Bg7 White rids himself of his good but poorly placed bishop. 13...Kg7 14. Rael Be6 15. f4 Rac8 16. c3 dc3 17. Nc3 Nc6 18. Kh1 Nd4! A great outpost for the knight. It will torment white for the rest of the game. 19. a3 b5 20. ef5 Rf5 21. Be4 Rf7 22. fe5 de5 23. Qg5 Rcf8 24. Kg1 Qc5 25. Rf7+ Rf7 26. Kg2 Nc2 27. Re2 Ne1+! 0-1 The knight ends the torture with a mortal blow! Mate is now inevitable.

JERRY SKEEN A - JIM WALKER CM ENGLISH Symmetrical 3 Knight A35

1. c4 g6 2. Nc3 Bg7 3. d4 c5 4. Nf3 cd4 5. Nd4 Nc6 6. e3 6. Nc2 is more common. 6...Nf6 7. Be2 O-O 8. O-O d6 8...d5 would lead to 9. cd5 Nd5 10. Nc6 bc6 11. Nb4 Nd7!= Van Scheltinga - Tarjan Wijk aan Zee '73-'74 9. Nd5 White forces the trades as in the line quoted above. 9. Bf3 Bd7 10. b3 Rc8 11. Bb2 +- ECO. 9...Nd5 10. Nc6 bc6 11. cd5 cd5 12. Qd5 Be6 13. Qd2 Qb6 14. Bd3 Rab8 15. f3 Rfc8 16. Rf2 Bh6 17. Re2 Rc7 18. b3 Bg7 19. Bb2 Bb2 20. Qb2 Rbc8 21. Kf2 Rc3 22. Rd1 a5 23. Bc4 Bc4 24. Qc3 Ba6 24...Be2?? 25. Qc8+ Kg6 26. Ke2 leaves black down a rook. 25. Qb2 Be2 26. Qe2 Rc3 27. Rd4 Qc5 28. Rc4 Rc4 29. Qc4 Qc4 30. bc4 So much for a draw. White has a slight advantage based on his king location and the weak black a-pawn. 30...Kf8 31. e4 Ke8 32. Ke3 Kd7 33. Kd4 Kc6 34. a3 e6 35. f4 f6 36. g4 a4 37. h4 Reminiscent of Civil War skirmish lines. 37...f5 38. ef5 ef5 39. g5! Zugzwang! Black must yield vital territory. 39...Kc7 40. Kd5 Kd7 41. c5 dc5 42. Kc5 Ke6 43. Kc6! Much better than 43. Kb4 Kd5 44. Ka4 Kc4! 43...Ke7 44. Kb5 Kd6 45. Ka4 Kd5 46. Kb5 Ke4 47. a4 Kf4 48. a5 Ke3 49. a6 f4 50. a7 f3 51. a8(Q) f2 52. Qa1 Ke2 53. Qb2+ Kf3 54. Qb1 Kg2 55. Qe4+ Kg1 56. Qg4+ Kh2 57. Qf3 Kg1 58. Qg3+ Kf1 59. Kc4 Ke2 60. Qd3+ Ke1 61. Qe3+ Kf1 61...Kd1? 62. Kd3 f1(Q) 63. Qd2++ 62. Kd3 Kg2 63. Qe4+ Kg1 64. Qg4+ Kf1 65. Ke3 1-0

CAPITOL OPEN CONT'D

MARK HATHAWAY CM - BARRY CHAFFIN A SICILIAN Leonhard-Sozin At B57

1. e4 c5 2. Nf3 Nc6 3. d4 cd4 4. Nd4 Nf6 5. Nc3 d6 6. Bc4 a6
 7. Nc6 bc6 8. e5 Ng8 Retreating to the original square is rarely a
 good sign. 9. Qf3! e6 9...Bd7?? 10. Qf7++ or 9...Bb7? loses at least
 one pawn and allows a kinghunt. 10. ed6 Bd7 11. O-O Bd6 Black gets
 the pawn back but is underdeveloped, with three pawn islands. 12. Bf4
 Bf4 Goodbye ye good ole bishop. 13. Qf4 Ne7 14. Rfe1 O-O 15. Ne4 Nd5
 16. Qd2 Qh4 17. Bf1 Rfd8 18. Nc5 Qb4 19. Qb4 Nb4 20. Rec1 Bc8 21. c3
 Nd5 22. Rd1 Re8 23. c4 Ne7 24. Rd2 a5 25. Rad1 White now has a choke
 hold on the open f-file. 25...e5 26. f3 Nf5 27. Kf2 a4 28. Bd3 Ne7
 29. Bc2 a3 30. b4 Bf5 31. Be4 Be4 32. fe4 f5 33. Rd7 fe4 Make that
 four ebony islands. 34. Ne4 Nf5 35. b5! Generating a passed pawn.
 35...cb5 36. cb5 Nd4 37. b6 Rf8+ 38. Kgl Rab8 39. b7 Ne2+ 40. Kh1 Nd4
 41. h3 Rf4 42. Nc5 Rf7 43. Rf7 Kf7 44. Rb1 Nc6 45. Nd7 Rd8 46. Ne5+!
 Ne5 47. b8(Q) Rb8 48. Rb8 Nc4 49. Rb4 Nd2 50. Rd4 1-0

DONALD GRIFFITH CM - GARY HARDIN CM PIRC B06

1. e4 g6 2. d4 Bg7 3. Nf3 d6 4. Bc4 c6 5. O-O Nf6 6. Qe2 O-O
 7. Bb3 a5 8. c3 8. a4 is best. 8...Na6 9. h3 and 8..Bg4 9. Nbd2 d5
 both lead to +-. 8...a4 9. Bc2 Re8 10. Nbd2 e5 11. Rd1 ed4 12. cd4
 Qc7 13. Qd3 Nbd7 14. h3 Nh5 15. Nf1 Nf8 16. g4 Nf6 17. Ng3 Ne6 18. Kh2
 b6 19. Be3 Ba6 20. Qd2 Bc8 21. Rg1 Ra5 22. Rg2 Bb7 23. Rag1 c5 24. d5
 Nd4!? Giving up a pawn to open up the position and gain counter play.
 25. Nd4 cd4 26. Bd4 Qc4 27. Nf5 Ne4 28. Be4 Bd4 29. Nd4 Re4 30. Nf5
 Qd5 Black has now gone up a pawn in the process of simplifying.
 Black has the more active position, bishop versus knight in an open
 endgame, and a centralized passer. 31. Qg5 Qe5+ 32. Rg3 Ra8 33. Rc1
 Re2 34. Nh6+ Kf8 35. Qe5 de5 The passer is demoted to a candidate.
 The rook was just to well placed to move. 36. Rc7 Bd5 37. Rd3 Ba2
 38. Kg3 Rb2 Oink! 39. Nf7 Rb3 39...Bf7? 40. Rf3. The text
 simplifys as is best. The connected passers should win. 40. Ne5 Rd3+
 41. Nd3 a3 42. Nb4 Bg8 43. Rb7 a2 44. Na? Ra2 The passers are cashed
 in for a piece. 45. Rb6 Ra3+ 46. f3 Ke7 47. g5 Be6 48. Rb7+ Bd7
 49. Rb6 Ra5 50. h4 Rf5 51. Ra6 Rf7 52. Rb6 Be6 53. Ra6 Bd5 54. Ra3 Ke6
 55. Kg4 Ke5 56. Rc3 Kd4 57. Ra3 Bc4 58. Ra4 Kc3 59. Ra3+ Kd2 60. f4
 Bd3 61. Kg3 Re7 62. Ra2+ Bc2 63. h5 Re3+ 64. Kf2 Rc3 65. hg6 hg6
 White can draw if he can trade his two pawns for black's one. 66. Ra6
 Bf5 67. Rd6+ Rd3 68. Ra6 Kc3 69. Ke2 Rh3 70. Ra3+ Kd4 71. Ra4+ Kc5
 72. Ra5+ Kb4 73. Re5 Bg4+ 74. Kd2 Rf3 75. Re4+ Kc5 76. Ra4 Kd5 77. Ra6
 Bh5 78. Ra8 Ke4 79. Ra4+ Kf5 0-1 Finally the pawn falls.

DONALD GRIFFITH CM - MARK HATHAWAY CM SICILIAN Najdorf Poison P. B97

1. e4 c5 2. Nf3 d6 3. d4 cd4 4. Nd4 Nf6 5. Nc3 a6 6. Bg5 e6 7. f4
 Qb6 8. Qd2 Qb2 9. Rb1 Qa3 10. f5 Nc6 11. fe6 fe6 12. Nc6 bc6 13. e5
 de5 14. Bf6 gf6 15. Be2 h5 16. Ne4 Be7 17. O-O f5 18. Rb3 Qa4 19. c4
 fe4 Would you believe 19 straight good "book" moves? 20. Qd1?! ECO
 gives 20. Qc3 leading to an equal position. To take a questionable
 move and attempt to improve on it is the very soul of top level chess.
 This is how theoretical novelties happen. 20...Bc5+ 21. Kh1 Bd4
 22. Bh5+ Kd8 23. Qg4 Ra7 +- Tratatovici-Urzica Romanian Championship
 1977 ECO. 24. Qg5+ Re7 25. Rd1 Rf8 26. h3 Qc4 27. Rb8 Kd7 28. Kh2 Kd6
 29. Qd2 Rg7 30. Be2? Failing to the queen sac. 30...Rf2! 31. Bc4
 Rgg2+ 32. Kh1 Rh2+ 33. Kg1 Rfg2+ 34. Kf1 Rg1++ 0-1

GARY HARDIN CM - GARY MORRIS B

PIRC/ROBATSCH

B07

1. e4 d6 2. d4 Nf6 3. Nc3 c6 4. Bd3 Nbd7 5. Nf3 g6 6. h3 Bg7
7. Be3 O-O 8. Qd2 Re8 9. O-O Qc7 10. Ne2 e5 11. c3 b5 12. Ng3 Nb6
13. b3 a5 14. Rac1 a4 15. Bh6 Bh8 16. c4 bc4 17. bc4 ed4 18. Nd4 Nfd7
19. Nf3 Nc5 20. Bb1 Ba6 21. Rfd1 Nc4 22. Qg5 Ne6 23. Qg4 Ne5 24. Ne5
Be5 25. f4 Bg7 26. Bg7 Ng7 27. f5 Bc8 28. Qf4 gf5?! Questionable at
 best. This destroys any safety black's king had. 29. ef5 Qb6+
30. Kh2 Ba6 31. f6! If the knight moves mate will follow. 31...Nd6
32. Qg4+ Kh1 33. Qh5++ 31...Qe3 32. Qe3 Re3 33. fg7 Rb8 34. Nf5 Re2
35. Rd6 1-0

GALEN MILLER C - LAWRENCE IORIO C

RUY LOPEZ Exchange

C68

1. e4 e5 2. Nf3 Nc6 3. Bb5 a6 4. Bc6 dc6 5. d3 Rather passive for
 an e4 player. More usual is 5. O-O f6 6. d4. 5...f6 5...Bd6 is
 needed here. 6. O-O Bg4 7. Nbd2 Qd7 8. a3 Bc5 9. Nb3 Ba7 10. Qe2
O-O-O 11. Be3 Be3 12. Qe3 b6 13. Rfd1 Qf7 14. d4 ed4 15. Nbd4 Ne7
16. e5 fe5 17. Ne5 Qh5 18. Ng4 Qg4 19. f3 Nd5 20. Qf2 Qd7 21. Ne2 Qe7
22. Rd3 Rd7 23. Rad1 Re8 24. Ng3 Nf6 25. Rd7 Nd7 26. h3 Qe3 27. Qe3
Re3 28. Nf5 Re2 29. Rc1 g6 30. Nd4 Rd2 31. Nc6 Nf6 32. Nb4 Kb7 33. g4?
 White has a 3-2 pawn advantage, but has just neutralized it. The text
 creates two backward pawns and traps the king on the first rank. In
 this situation the "candidate" pawn must lead the attack. That would
 be the f-pawn in this case. 33...a5 34. Nd3 Kc8 34...g5! This would
 have exploited white's 33rd move. Black would have been in great
 position to win after 34...g5! 35. h4 Nd7 36. f4 Re2 Black continues
 to allow white to escape his mistake. 37. f5 Re4 38. Nf2 Rf4 39. fg6
hg6 40. Kg2 Ne5 41. Kg3 Rf3+ 42. Kg2 Rf4 43. Kg3 Rf3+ 44. Kg2 Rf4 5/5

UPCOMING SCHOLASTIC CHESS TOURNAMENTS

- April 6, 1991 FSC Scholastic Pre-States Warm-up. Fairmont State
 College, Fairmont, WV. 2 sections. EF \$7 & \$6. TL 40/1
 Both K-12 B under 1200 only. Trophies and medals.
- April 13, 1991 Cross Lanes Scholastic IX. Cross Lanes Elementary
 2 sections. A- K-9 B- K-6 EF \$5 TL 30/Game.
- April 20-1, 1991 1991 West Virginia State Scholastic Championship.
 Jackson's Mill, Weston, WV. 3 sections. Elem K-6,
 JHS K-9, and HS K-12. EF \$6-\$7-\$8 G/30, G/60, G/75.
- April 12-4, 1991 National JHS Championship. Hyatt Regency Hotel
 Dearborn, Michigan. 4 sections. TL 25/1 EF \$20
- April 26-9, 1991 National Elementary Championship. Rye Town Hilton
 Rye Brook, New York. 4 sections. TL 30/60 EF \$20
- May 3-5, 1991 National High School Champ. Castlegate Hotel
 Atlanta, Georgia. 3 sections. TL 25/1 EF \$20

POSTAL NEWS

The 1991-2 West Virginia Postal Tournament is over. There were only two who registered for the event, Byron Funkhouser and Terry Riley. As the event was beginning Byron withdrew as he was moving back to Tennessee. This makes Terry Riley the champion by default.

I once joked that I would eventually win a state championship by virtue of being the only resident left. It is truly a sad day for West Virginia when this has come true at least in postal.

How can you help? Read the beginners' guide which follows and be prepared for 1993-4. Otherwise this official state championship will go the way of the \$.25 stamp.

The following is the last game from the 1989-90 WV Postal Championships. David forfeited the game for tournament purposes, but was allowed to finish it for ratings.

JOHN ROUSH A - DAVID MARPLES CM CATALAN Open E02

1. c4 e6 2. g3 Nf6 3. Bg2 d5 4. d4 Nc6 5. Nf3 dc4 6. Qa4 Bd7
7. Qc4 Na5 8. Qd3 c5 9. O-O Nc6 9...Rc8 is more usual. Black first takes care of his awkward knight. This is rather passive play.
10. dc5 Bc5 11. a3 Qb6 12. b4 Bd4 13. Nc3 Bc3 14. Qc3 O-O 15. Bb2 Rad8
16. Rfd1 Bc8 17. Ne1 Ne7 18. g4 h6 18...Ng4?? 19. Qg7++ 19. h4 e5
20. g5 hg5 21. Qe5 Nf5 22. hg5 Rde8 23. Qf4 Nh5 24. Qf3 Qg6 25. Bc1
Nh4 26. Qd3 Ng2 27. Ng2 Bf5 28. Qb5 Be4 29. Rd4 a6 30. Qc5 Bg2 31. Kg2
White seems to be just hanging on. He is paying for the kingside forays. 31...Re2 32. Be3 Re8 33. Kf3 Rc2 34. Qd5 Qc6 35. Qc6 Rc6
36. Rd7 b5 37. Rad1 Rc3 38. Rd8 Rf8 39. R8d3 Rc6 40. Rd6 Rfc8 41. Ke4
Re8+ 42. Kf3 Re6 43. Rc6 Rc6 44. Bc5 f5 45. Rd5 g6 46. Bd4 Kf7 47. Bc5
5/5

West Virginia's Top 10 Postal Players

As of April 1991 Chess Life Postal Insert.

- 1. James McAlister 2123 R
- 2. Jeff E Hohn 2070 P
- 3. Dennis Funkhouser 2010 P
- 4. Ed Garner 1987 P
- 5. Jeffrey Jackson 1967 O
- 6. John Everet Roush 1939 Q
- 7. Terry J Riley 1902 O
- 8. Randy M Harper 1804 N
- 9. David Lee Bruner 1800 N
- 10. Raymond C Lietz 1769 M

A Beginner's Guide to Correspondence Chess in the USA

This is your invitation to experience the most perfect form of chess known to mankind. Have you ever seen an interesting combination, variation, or sacrifice in a regular tournament, and not had the time to check it out? You either sigh and play a safe move, or go for it and hope. Nevermore, with correspondence you have time to indulge in numerous variations to great depths.

In correspondence you have 30 days of reflection time for every 10 moves. That is the time from when you receive your opponent's card, until you mail your reply. This works out to an average of 3 days (72 hours) per move. Time can be saved up to spend several weeks on one move if desired.

Correspondence chess opens up ordinarily impossible opponents from across the state or the world. It allows you to compete for state, national, and world championships from your own den/living room, irregardless of your work or family schedules.

Correspondence chess is an excellent way to learn openings to greater depths for "over the board" (OTB) tournament games. You may spend 10 to 20 weeks in each particular opening played. Thematic tournaments are even available, in which all games start from a set opening position. I guarantee you will learn certain opening variations deeper than you ever thought possible. My openings suffer in OTB events from infrequent play. But, pity the player who falls into a line I've played in a recent correspondence game! Correspondence is a constant unbroken process. You do not get rusty.

Books are legal to use, insuring even weaker players a chance to get to even and interesting middlegames. An extensive library will help, but is not required. A good general work such as ECO or MCO would be best. WARNING: Computers and human sources are strictly forbidden! As you can imagine this is virtually impossible to enforce. A correspondence players only rewards are an inner pride at a well played game, and the knowledge learned from the contest. Neither of these would be gained from using an outside source.

As you learn the openings you will experience better middlegames. In turn you will be exposed to middlegame concepts. More important you will start to understand the transition periods from opening to middle and from middle to endgame.

Games involving players of equal strength will often result in endgames. This of course will increase your knowledge of certain endgames you happen to play over several weeks or months. My average games are in the 30-40 move range, and last roughly 1 year.

To get started you will need a way to keep track of all your games. The best method is the "Post-a-log" by Joseph Viggiano a native of West Virginia. It can hold up to 24 games in progress and is no bigger than the normal chess book! These can be purchased from Joe or through the USCF. You will need cards (cheaper and more convenient than letters). Cards can be purchased pre-printed with chess information on them and in various languages. However, the most practical is the pre-stamped cards from your US Post Office. Cost is \$0.19 per card which includes postage!

Postal Guide Cont'd

To find opponents you may enter a tournament from one of several correspondence organizations including USCF. A synopsis of the various organizations follows on pages 14-15. I suggest the USCF since most of you are already members. The others require an additional membership fee. USCF tournaments are announced regularly in Chess Life, with the main event being the Golden Knights. IF YOU ENTER A TOURNAMENT PLEASE FINISH IT!

The major alternative organizations are the CCLA and the TCC. A good idea would be to join these in the summer at their half price rates. Both pro-rate their membership fees.

CCLA is the oldest correspondence organization in America. It has tended to retain the descriptive notation and a standard 3 days per move time control. These may have changed in the past few years. Their championship is the Grand National. They also hold a team tournament every two years. This organization produces the Chess Correspondent an award winning magazine.

TCC is the new kid on the block. The major objective of this organization is to bring big money events to correspondence chess. To date this group appears to be well on their way. This organization produces the The Chess Connection another award winner. I joined recently mainly because of this magazine. Remember this is a fledgling organization. It looks good but is there a solid foundation?

The USCF is also experimenting with big money events. I do fear that big money prizes will bring the same problems to correspondence that now plagues tournaments such as the World Open. Hopefully we will all remain ethical players regardless.

The more experienced players should consider the alternative organizations, and international play. International IS NOT recommended for newcomers. The play is slower, more expensive, and there is a language barrier.

International correspondence chess is conducted by the ICCF-US. To obtain the world championship this is the organization for you. See the championship ascension ladder found on page 16. You are already a member if you belong to the USCF or any of the other four organizations.

International play can run into a language barrier. This is conquered by using the international notation system. Each square has a two digit number. Moves are square to square such as 1. 4244 7866 is the same as 1. d2-d4 Ng8-f6. Post cards are available with the five official FIDE languages on them.

This problem can be avoided by entering the Anglo-Pacific tournaments. These are international events for players from predominately English speaking countries. Many of your opponents would be from the USA. Another form of international play are the national friendly matches. I'm entering my second one now. Norway is scheduled for spring.

Terry Riley Postal Director

Postal Chess Organizations in the U.S.A.

by J. Franklin Campbell

3355 Winter Wood Court; Marietta, GA 30062; U.S.A.

In the U.S.A. our over-the-board chess activities are coordinated by one central organization, the USCF (United States Chess Federation). However, our domestic correspondence chess activities are not centralized and fall under the guidance of a number of organizations. The five main domestic organizations will be listed in this article. Each of these organizations runs a variety of correspondence chess events, publishes a magazine, and maintains and publishes a list of ELO-type ratings of its members. Many players are members of more than one of these groups.

In order to represent the United States postal chess players fairly in the international correspondence chess community these five organizations have created the USPCF (United States Postal Chess Federation), which represents members of all five domestic groups. Each of the five organizations have one member representing them in the USPCF. The chairman is Mr. Maurice Carter. Operating under the direction of the USPCF is the ICCF-U.S. office. Max Zavaneli is the ICCF-U.S. Secretary and is responsible for all ICCF activity by U.S.A. players. Any member of one of the five USPCF organizations may play in ICCF events.

USCF (United States Chess Federation). This is the primary chess organization for Over-the-Board players in the U.S.A. and was established in 1939. Their magazine Chess Life is published monthly but largely ignores correspondence chess. The exception is the very interesting monthly column "The Check is in the Mail," written by Alex Dunne. There are approximately 51,000 members, of which only a small percentage participate in the postal chess program. USCF, 186 Route 9W, New Windsor, NY 12550-9919, USA.

CCLA (Correspondence Chess League of America). The CCLA was established in 1897 and is the oldest of the U.S.A. postal chess organizations. They have approximately 1000 members. CCLA publishes a monthly magazine The Chess Correspondent (ten issues per year). The CCLA offers a wide variety of correspondence chess tournaments. CCLA, P.O. Box 416, Warrenville, IL 60555, USA.

APCT (American Postal Chess Tournaments). This postal chess organization was established in 1967 and is run by the well-known chess organizer Helen Warren. They have approximately 1200 members and publish APCT News Bulletin six times a year. The APCT offers a variety of postal tournaments (nine different events) and also administers ELECTRO-POSTAL events through the USA Today Sports Center computer network. APCT, P.O. Box 305, Western Springs, IL 60558, USA.

TCC (The Chess Connection). This recently organized (1986) correspondence chess group was set up by Richard Weiss to provide postal players with an opportunity to play for big prize funds. TCC is a USCF affiliate and at least some of their events are rated by the USCF. TCC is open to International Membership and currently has over 1300 members. They have been publishing the bi-monthly magazine The Chess Connection since January 1989. The Chess Connection, P. O. Box 37186, Cleveland, OH 44137-0186, USA.

NOST (Knights of the Square Table). This organization was formed in 1960 with the idea that creating friendships is more important than scoring chess wins. Les Roselle operates this organization of approximately 300 members. In addition to standard correspondence chess they are interested in games such as Go, Shogi, and Chess Variants. The club publishes the bimonthly magazine NOST-ALGIA. The NOST, 111 Amber Street, Buffalo, NY 14220.

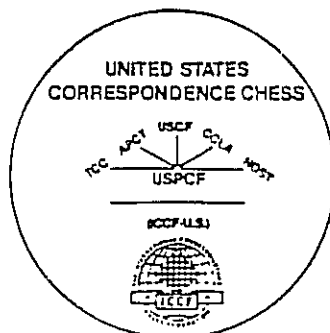
International

ICCF-U.S. (US office of the ICCF). This organization has no magazine or individual membership fees. All participation by USA players in ICCF events are through this office. News and tournament results are published occasionally by the five USPCF organizations in their magazines. ICC magazine publishes these items on a regular basis. ICCF-U.S. Secretary Max Zavanelli also sends frequent news releases to chess journalists giving the latest news and results. The ICCF-U.S. office also conducts the USCCC (United States Correspondence Chess Championship) every two years for higher rated players. The first seven official U. S. Champions (in order) are: Tony Cayford, Dr. Eugene Martinovsky, Prof. Victor Contoski, Curtis Carlson, P. Fielding and K. Plesset (5th Co-Champions), Robert Reynolds, and David Taylor. The USA has had two ICCF World Correspondence Chess Champions: Hans Berliner and Victor Palciauskas. ICCF-U.S. also organizes ICCF team matches between the USA and other countries and conducts other special events, such as the Al Horowitz Memorial Open and the First U. S. International Title Tournament (Invitational).

ICCF-U.S. operates the APTB (Anglo-Pacific Tournament Bureau), which organizes ICCF tournaments and team matches with players from the USA, Australia, New Zealand, Canada, Singapore and Hong Kong. The APTB allows USA players to get involved in ICCF competition with shorter time delays between moves and less of a language barrier than when playing opponents from every country. Max Zavanelli, ICCF-U.S. Secretary, 729 South Prospect, Park Ridge, IL 60068.

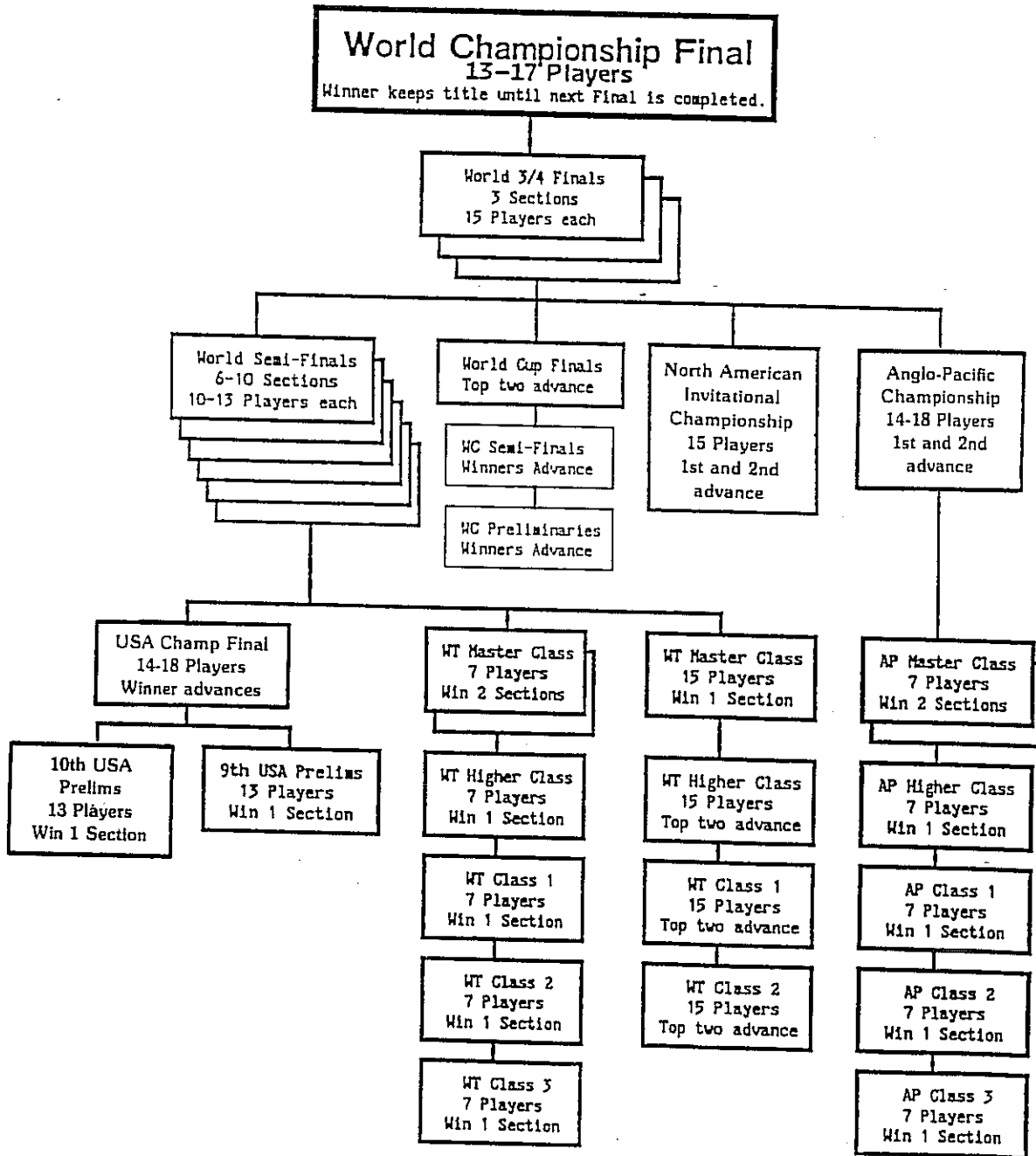
For current subscription and membership fees write to the addresses above. Usually they will send you information and a past issue of their magazine upon request.

This article has been reprinted with the permission of the original author. Some outdated information was edited or omitted.



ASCENSION TO WORLD CHAMPION!

Path for USA Players



ICCF Rated
 USA Championship Finals
 WT and APTB Master Class
 North American and APTB Championship

ICCF-US 1991

West Virginia Top 25 Active Players

As of Annual List 1990

February 1991 Supplement

1. Roush, John	2235 R
2. Bukovac, Robert	2185 Q
3. Funkhouser, Dennis	2175 R
4. Griffith, Donald	2124 Q
5. Hathaway, Mark	2123 Q
6. Barker, Marvin	2118 R
7. Walker, James	2108 Q
8. Haas, David	2097 Q
9. Katz, Andy	2090 Q
10. Chang, Alex	2088 Q
11. Gross, Gerald	2059 Q
12. Hardin, Gary	2041 P
13. Kiernan, Bernard	2002 Q
14. Hines, David	1976 P
15. Hohn, Jeff	1957 O
16. Bierce, Randy	1954 P
17. Cady, Danny	1941 O
18. Tomasko, Ron	1924 P
19. Gikas, James	1917 O
20. Dolgovskij, Konsta	1911 O
21. Tabotabo, Darcy	1858 N
22. Simpson, Charles S	1822 N
23. Skeen, Jerry	1818 N
24. Mallott, Stephen	1815/12
25. Felton, Michael	1805/6



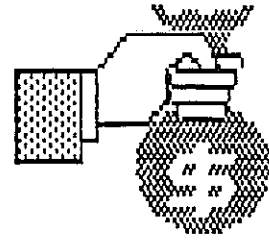
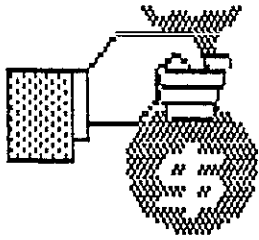
WARNING!



A warning to all members considering playing in a Randy Bierce directed tournament! Do NOT under any circumstances leave the event before collecting your prize money.

Randy has in the past not bothered to send them and/or will claim he gave it to a friend of yours to deliver. Nevertheless your chances of ever getting your prize would be equivalent to those of a snowball in hell.

The safest course is to simply avoid his tournaments like the plague.



53RD WV CHESS CHAMPIONSHIP

August 31- Sept. 2, 1991

Site: Lewis County High School Take I-79 EXIT 99
Court Ave. Take 33 WEST to Weston
Weston, WV 26452 Turn right at the first
stoplight (2 miles)

Reg: 9-11 Rd 1 12:30 TC 40/2 20/1

EF Adult \$12 Jr. \$9 at site \$4 more.

WVCA membership required \$7 No Smoking

1st \$100 2nd \$65 Top A,B,C,D/E each \$50

Trophy to top resident and junior resident.

Super 8 Motel is recommended. I-79 EXIT 99 Take 33 EAST
1-269-1086 Next to McDonald's

1 person \$34.22 2 person \$41.08 \$5 per extra.

If enough rooms are reserved a discount may be given.
Mention WVCA when reserving! Reserve early. There is
an Arts and Crafts Festival in Lewis County.

Send entries to: Michael Baker, 344 Mid Ave.
Weston, WV 26452

Director: Terry J Riley Senior TD

SPEED TOURNAMENT SUNDAY NIGHT