

*West Virginia
Chess
Bulletin*



Vol. #202

Summer 1990

Published By

West Virginia Chess Association

Greetings,

Welcome to the fourth and final edition of the WVCA Bulletin for this chess year. (Don't panic the chess year ends and begins on Labor Day Weekend.)

The reader will quickly notice several changes in the Bulletin. First, this edition is being produced by a print shop copier. More expensive, but necessary in the summer. Second is the addition of diagrams. These were accomplished with the use of Copyaid transfers. Finally, this edition is a little short of the usual 20 pages.

I must apologize for tantalizing you with prospective material that did not materialize. Most of my excellent sources seem to have taken the summer off, just like your editor. As editor I felt it was more important to meet a reasonable time deadline, rather than wait for more material. Hopefully this can be a lasting tradition.

My many valuable sources made this year's publications possible. I would like to especially thank the following: Thomas Bergquist, David Bruner, Michael Cornell, Dennis Funkhouser, Dr. Neil Gibbons, Donald Griffith, Mark Hathaway, David Marples, Dan O'Hanlon, and John Roush. Thanks also to those players who donated materials to the aforementioned.

This year I've tended to take a light-hearted look at ourselves and the game of chess in general. Hopefully I will be forgiven for jesting, embarrassing, chiding, or making you cringe at my analogies. As in life I only pick on those worthy of friendship and mutual respect (I'm much meaner to those I dislike!).

As you may remember I made only one promise to you this year. To get this darn thing published. With this page my task is complete.

NEXT!



Terry J Riley

TABLE OF CONTENTS:

Editor's Page	p. 1
East - West Match	p. 2
World Open Games	p. 3
Top 50 Active Ratings	p. 4
Hathaway Annotates	p. 5-8
Speed Tournament Ad	p. 8
WVCA Constitution	p. 9-11
Grand Prix Standings	p. 11
KVO '90	p. 12-13
Postal news	p. 14-5
Membership Announcement	p. 15
1990-1 WV Postal Championship Ad	p. 16

ANNUAL EAST - WEST CHARLESTON CC MATCH

June 19, 1990

Charleston, WV

TD - D. Griffith

The annual match turned out to be rather one-sided this year. The west squad collected a convincing 4 - 1 victory. The lone east point was garnered by Robert Bukovac. The west side put heavy emphasis on the west by bringing in an expert from Kentucky (Gary Hardin).

WEST

EAST

Mark Hathaway	0-1	Robert Bukovac
Donald Griffith	1-0	James Walker
Gary Hardin	1-0	David Michael
Jerry Skeen	1-0	Charles Waugh
Jason Hayes	1-0	John Davidson

DONALD GRIFFITH CM - JAMES WALKER CM KING INDIAN D/PIRC A42

1. e4 d6 2. d4 g6 3. c4 Bg7 4. Nc3 c6 5. Be3 Nd7 6. Bd3 a6 7. Qd2 b5 8. Nf3 Bb7 9. O-O Ngf6 10. Rae1 10. e5 may be better (DG). 10...Rc8 11. Bh6 O-O 12. Bg7 Kg7 13. e5 Ne8 14. e6 fe6 15. Ng5 Threatening the queen fork on e6. 15...Nc7 16. Re6 Rf6 17. Rf6 ef6 18. Nge4 Qe7 19. c5 dc5 20. dc5 Nc5 21. Nc5 Qc5 22. Ne4 Qd4 23. Qc2 Nd5 23...Ne6 is stronger as it prevents white's follow 24, Nc5 24. Nc5 Re8 25. Nb7 Nb4 26. Qc5 Qc5 27. Nc5 Na2 28. Na6 Ra8 29. Nc7 Ra7 30. Ra1 Rc7 31. Ra2 Kf7 32. Kf1 Ke6 33. Ke2 Kd5 34. Ra8 Kc5 35. Kd2 Kb4 36. Kc2 c5 37. Rb8 c4 38. Be4 Re7 39. Bf3 Re5 40. Rb7 h5 41. Rg7 h4 42. Rg6 h3 43. gh3!? 43. Rf6! is much stronger. The white pieces would have worked well together. The text move restricts the coordination of the two pieces. 43...Rf5 44. Rg3 Rf4 45. Kc1 f5 46. Kc2 Ka4 47. Kc3 b4+ 48. Kc2 Kb5 49. Kd2 Rd4+ 50. Ke2 c3 51. bc3 bc3 52. Rg1 Rd2+ 53. Ke3 Kc4 54. Rd1 f5+ 55. Kf5 Rf2 56. Ke3 Rh2 57. Bd5+ Kc5 58. Be6 c2 59. Rc1 Kd6 60. Bf5 Ke5 61. Bg4 Kf6 62. Kf3 Kg5 63. Kg3 Rd2 64. Bf3 Kf5 65. h4 Kg6 66. Be4+ Kh6 67. Bc2 Are you asking why black does not resign? (See diagram #1) If so, remove the rooks from the board. You are now looking at a dead draw! Try to mate or promote from the white side if you like. You can stalemate, but you can not drive white from the corner. Change the bishop to a dark square. This is a chess fact best learned in practicing. See diagram #2 for an example of a player learning this lesson the hard way. 67...Rd6 68. Ra1 Rc6 69. Be4 Rc3+ 70. Kg4 Rc7 71. Ra6+ Kg7 72. Kg5 Rd7 73. h5 Rd8 74. Ra7+ 1-0

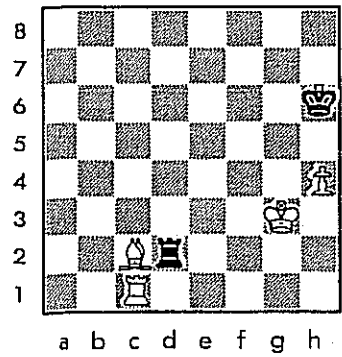


Diagram #1
after 67. Bc2

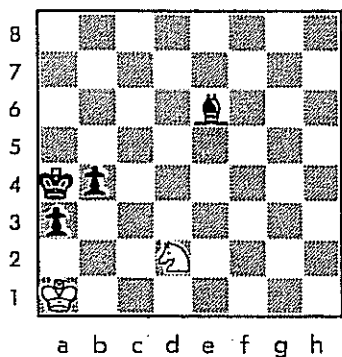


Diagram #2
after 59. Ka1

T Riley - D Caldwell
Concord '85

59.....b6??
60. Nb6! 5/5

WORLD OPEN '90

The World Open is once again over. This year a total of 4 West Virginia players competed.

Defending state champion John Roush participated in the Open section as usual. I believe John scored 3 points out of 8 (give or take a point).

The Under 1800 section included Terry Riley, Robert Burkhardt, and Andrew Buttles. All three players were residing in the Eastern Panhandle at that time. Riley and Buttles each scored 6.5 points out of 9. As you can guess that was a half-point short of the money, but good enough to tie for 16th place out of 252 players. These two actually were paired together at one point (See below). Burkhardt finished with 4 points well out of the money.

Burkhardt and Buttles are currently trying to move to Delaware. Speaking of Delaware, Joe Viggiano was in attendance. Joe a native of northcentral West Virginia is still playing, but was allowed the Postalog to be sold through USCF. Old customers and friends can still buy direct from Joe.

OPEN Section:

JOHN ROUSH CM - MARK EIDEMILLER M ENGLISH Rubinstein A34

1. c4 Nf6 2. g3 c5 3. Bg2 d5 4. cd5 Nd5 5. Nc3 Nc7 6. Nf3 Nc6
7. O-O g6!? 8. d3 Bg7 9. Be3 b6 10. Rc1 10. Qd2 O-O 11. Rfd1 Rb8 12. Bh6 Nd4 = Adamski-Cserna Budapest 1979. 10...O-O 11. Qd2 Bb7 12. Rfd1 Nd4 13. Ne1 Allowing the king fianchettoed bishop to be traded.
13...Bg2 14. Ng2 Nf5 15. Ne4 Nd5 16. Bf4 e5 17. g4?! This will prove to weaken the king-side severely. 17...Nd4 18. Be3 Qd7 19. Bd4 ed4 20. g5 Rae8 21. Rf1 f5! 22. gf6 Opening a file for black's f-rook.
22...Nf6 23. Ng3 Ng4 24. b4 Too late. This diversion will not work.
24...Bh6 25. f4 Ne3 26. Ne3 Re3 27. bc5 Qh3 28. Rf3 Bf4 29. Qc2 Rf3 30. Qc4+ Kg7 31. Qd4+ Kh6 0-1

UNDER 1800 Section:

ANDREW BUTTLES B - TERRY RILEY B STONEWALL ATTACK D00

1. d4 d5 2. e3 Nf6 3. c3? Oops! Mr. Stonewall transposes. 3. Bd3 must be played first. 3...Bf5 4. Bd3 Bd3 5. Qd3 So much for white's good bishop. 5...Nbd7 6. Nf3 Another transposition. White is noted for playing f4. 6...e6 7. O-O c5 8. Nbd2 cd4 9. ed4 Bd6 10. Re1 O-O 11. Ne5 Qc7 12. Ndf3 Rac8 13. Bg5 Ne4 14. Bf4 f6 15. Nd7 Qd7 16. Bd6 Nd6 17. Nd2 Rfe8 18. f4 Qb5 19. Qc2 Nf5 Threatening to win the pawn. This is the old frozen pawn trick. It gets 'B' players quite often. 20. Nb3 b6 Played to constrict the knight. 21. Re2? This move is not excessively bad until you couple it with 22. a3? 21...a5 22. a3? White has not noticed the deep freeze after all. 20. Nb3 had just been a lucky coincidence. 22...a4! 23. Nc1 Nd4 24. Qd2 Ne2 25. Ne2 Qc5+ 26. Kf1 e5 27. Rd1 Rcd8 28. Qc2 Qc4 29. Qd2 ef4 30. Re1 Re3 31. Kf2 Rde8 32. Qc2 f3 33. gf3 Qh4+ 0-1

West Virginia Top 50 Active Players

As of September Supplement 1990

1.	Bukovac, Robert	2181
	Roush, John	2181
3.	Funkhouser, Dennis	2171
4.	Barker, Marvin	2152
5.	Griffith, Donald	2139
6.	Hathaway, Mark	2119
7.	Katz, Andy	2078
8.	Markovitz, Neil	2065
9.	Chang, Alex	2063
10.	Walker, James	2030
11.	Kiernan, Bernard	2002
12.	Hines, David	1975
13.	Homer, Paul	1965
14.	Bierce, Randy	1959
15.	Hohn, Jeff	1950
16.	Cady, Danny	1941
17.	Gikas, James	1916
16.	Dolgovskij, Konsta	1884
18.	Hart, Vernon	1857
19.	Lafferty, Larry	1831
20.	Simpson, Charles S	1822
21.	Mallott, Stephen	1815/12
	Tabotabo, Darcy	1815/08
23.	Skeen, Jerry	1810
24.	Varchetto, Richard	1792
25.	Lewis, Phillip	1777
26.	Chang, Angela	1768
27.	Riley, Terry J	1767
28.	Morgan, Ack II	1761
29.	Davis, Paul W	1759
30.	Cornell, Michael	1755
31.	Davidson, Travis	1751
32.	Edward Shade	1744
33.	Brewster, John	1736
34.	Tucker, Stephen	1730
35.	Burkhardt, Robert	1718
36.	David Iorio	1708
	David Michael	1708
38.	Hudson, Carl	1697
39.	O'Hanlon, Dan	1686
40.	Maier, Robert	1683
41.	Conley, Michael	1677
42.	Butcher, Markle	1676
43.	Sayre, Paul	1669
44.	Lieven, Patrick	1668
45.	Morris, Gary	1665
46.	Holsberry, Richard	1664
47.	Shuff, Corey	1653
48.	Hendershot, Allen	1646
49.	Brammer, Michael	1645
50.	Bordenet, Mark	1644

FLASHBACK with Mark Hathaway

DATELINE: CLEVELAND Spring 1984

Our faithful readers once again get to venture into the world above 2000. Mark has sent a game from the 1984 Cleveland Open. The game was complete with annotations. The game is being presented below with only a few changes.

JIM MILLS NM - MARK HATHAWAY CM

1. Nf3 Nf6 2. b3 e6

Allowing black to capture the bishop should it go to a3. This also sets up a quick castle, protecting the g-pawn.

3. Bb2 d5

Black would have preferred to develop the bishop, but was worried about 3... B7 4. e4 Ne4 5. Bg7.

4. e3 Be7

4...Bd6 followed by ...Qe7 may have been better.

5. d4 Ne4

Black is trying for ...f5 with a Dutch Stonewall formation. ...O-O and ...c5 for queenside play would allow the opening of the a1-h8 diagonal via dc5.

6. Bd3 f5 7. Ne5 O-O

White threatened 8. Qh5+. If white now chases the knight on e4 away, the center will be the scene of operations, rather than the queenside.

8. O-O Nd7 9. Nd7 Bd7

White must not have been ready to play 9. f4 Ne5 10. fe5 or even 10. de5.

10. c4

In light of his follow-up this is a wasted tempo.

10...Qe8

Black wishes to play on the kingside, and to promote the following pieces to better squares if given time: c6, Bd6, Qg6, or Rf8-f6-g6.

11. f3 Nf6 12. Nd2

12. Nc3 looks better, but he might have plans for e4, or f4 and Nf3.

12...Qg6 13. Qe2 Rae8

Black was concerned about coordinating his pieces in a limited space. Especially about the possibility of 14. e4 threatening 15. e5 when the f6 knight can not retreat. Black had planned on 14...c6 15. e5 Nh5 intending to continue maneuvering pieces to the kingside; while not losing Nh5. 13...Rae8 specifically responds to the possibility of 14. e4 c6 15. ef5 when the rook defends e7 and immediately contests the e-file.

14. Kh1

Preparing 15. g4. Both players want to gain open files with advantage on the kingside.

14...Qh6

This removes the pin on f5, attacks e3, and keeps pressure on white's king.

15. f4

White was probably worried about the weaknesses at f4 and g3, which would exist after e4. He threatens Rf1-f3-h3.

15...Ne4

This immediately threatens Ng3+ and prepares 16...Bh4 or Rf8-f6-g6. 16...Kh8, 17...Rg8, 18...g5 is also possible.

16. Rf3 Qh5 17. Be4

If 17. Qe1 to break the pin then 17...Bh4 would be strong. 18. Qd1 Nf2+, 18. Rh3 Be1 19. Rh5 Bd2, or 18. Qe2 Ng3+ winning.

17...fe4 18. Rf2 Qe2 19. Re2

Now the knight on d2 is poorly placed since the pawns on e4 and d5 limit its' mobility severely. Black endeavors to open the position in a way to use his two bishops, while white's knight and dark bishop languish.

19...g5 20. Rf1

20. g3 was probably better.

20...gf4 21. ef4 c5 22. dc5 Bc5

White could not allow 22...Bf6. White has removed his central pawns so black's pawns at e4 and d5 will be strong. White has created pawn majorities on both wings.

23. Be5

White protects f4 to free the f-rook.

23...h5

Preventing 24. g4 and white's offensive plans.

24. Rc1 b6 25. Nf1

Finally the knight will be useful on e3 or g3.

25...Kf7

This prepares 26...Kg6 or ...Kf7-e7-d6 to support central pawns.

26. Rd1 Bc6 27. Ne3 Be3

Since all the central play revolves around the white squares, ...Bc5 is only useful if it can support ...d4.

28. Re3 dc4!

White can not double on the d-file, so Black challenges for possession of it. This also creates two isolated pawns on white squares (c4 and a2) which may be vulnerable.

29. bc4 Rd8 30. Rc1

30. Reel might have been better.

30...Rd2 31. h3?

White should have played 31. a3, though the defense is difficult.

31...Ra2

White has two hopes. To gain a direct attack on black's king or to exchange rooks into an opposite color bishop endgame.

32. c5 b5 33. Rd1 Bd5 34. f5 Rc8 35. fe6+ Ke6 36. Bd6 a5

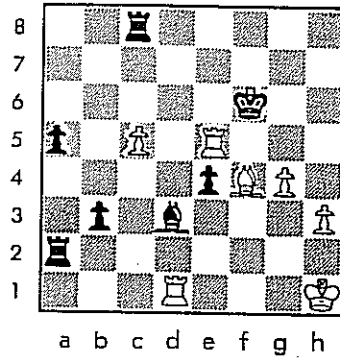
These moves completed time control and were played quickly. A possible try was 35. f6 intending Re3-g3-g7. To prevent black considered ...Rg8 to prevent white's rook sortie.

37. Rg3 Bc4 38. Rg5 Bd3

Preventing the d-rook from a king hunt on f1 or e1, and prevents 39. Rb1. It acts as a shepherd for the b-pawn's queen march.

39. Rh5 b4 40. Bf4 b3 41. Re5+ Kf6 42. g4 Rh8!? See diagram 3

White's pawn advance comes too late. White does control h5, g5, f5, and e5 so he could come close to a perpetual check if black's king couldn't play to the d-file. If 42...Kd7 43 Re4! If 42...Rc6 43. Rf5+ Kg6 44. Rg5+ Kf7 45. Rf5+ Rf6.



43. Rf5+ Ke6 44. c6

44. Re5+ Kd7 45. Re4 Rh3+ 46. Kg1 Kc6. The rook on h3 protects d3 to give the king on d7 one free move to get out of the pin.

44...Rh3+ 45. Kg1 Rc2 46. Re5+ Kf6 47. c7 b2 48. Ra5

Threatening 49. Be5+ Kg6 50. Bb2, but even this fails now that the white king is exposed to a coordinated attack 50...Rg3+ 51. Kh1 Rc7 threatening 52...Rh7++. 48. Re8 looked better.

48...e3!

"Believe it or not this threatens 49...Rh1+ 50. Kh1 Be4+ 51. Kg1 Rg2+ 52. Kh1 [52. Kf1 e2+ 53. Ke1 ed1(Q) 54. Kd1 b1(Q)+ 55. Bc1 Qc2+ 56. Ke1 Qe2++] 52...Rd2+ 53. Kg1 [53. Kf1 e2+ 54. Kf2 ed1(Q)+ winning.] 53...Rd1+ 54. Kh2 b1(Q) threatening 55...Bb7 as well as a direct attack on the white king by 55. Rh1 or 55. Rd2." (Mark admits to only seeing the most forcing lines over-the-board. TJR)

49. Be5+ Kg6 50. Ra6+?? Ba6 51. Bb2 Rg3+ 52. Kh1 Bb7+ 0-1

WV Speed Championship 1990

Don't forget this annual tradition. This event is usually held Sunday after round 4 of the Labor Day Championships.

Wind up your clocks, strap down your belts, and tie into this one! The winner receiving the ignoble title of the "best fastest man in West Virginia". (Person is actually more correct but it loses something in the translation.)



WVCA Constitution



ARTICLE I:

The name of this organization shall be the West Virginia Chess Association, known as the WVCA.

ARTICLE II:

Its' purpose shall be to promote acquaintance, understanding, and fellowship among chess players of West Virginia. It will also conduct the annual State Championship over the Labor Day weekend and be responsible for any other events the membership or the Board of Directors will select. It shall put out a Bulletin at least twice a year.

ARTICLE III:

Membership shall consist of all interested in the game of chess. There shall be business meetings held, preferably during the State Championship, for the purpose of electing officers and transacting association business. Members are entitled to vote in person. An option of voting through the WVCA Bulletin is available during the year when it is not practical to convene a business meeting. This can be done at the discretion of the Board of Directors, time permitting.

There shall be the following classes of memberships:

- Honorary Life Members - No dues, full voting privileges.
- Members over 18 years of age - \$7.00 annually for dues.
- Members 18 years old and under - \$4.00 a year with bulletin
and \$2.00 a year without bulletin.

Membership dues are payable in advance, with credit given for expired quarters. Fiscal year shall begin and end with Labor Day. Residence outside the state is not a bar to membership; however, it is a bar to holding the title of state champion. Military personnel and college students who are home on annual leave or summer vacation are eligible for the title so long as prior to their enlistment or enrollment they were residents of the state.

ARTICLE IV:

Officers of this association shall be the President, Vice-President, Secretary-Treasurer, Postal Director, and the Bulletin Editor, duly elected at the annual business meeting except for the Postal Director who shall be elected every two years for a term of that length.

The President shall preside at all business meetings. He will appoint committees. He will act as chairman during any meeting of the Board of Directors.

The Vice-President shall preside in the absence of the President or act as his designate when requested of him.

The Secretary-Treasurer shall collect all dues and monies owed the association. He will keep on file minutes of the association's business meetings. He will submit a financial report of the association at the annual business meeting on Labor Day. He will pay all accounts of indebtedness that have been certified for payment by the other board members or himself. He will handle correspondence for the association.

The Postal Director will organize and direct a Postal State Championship every two years.

The Bulletin Editor will be responsible for publishing the WVCA Bulletin at least twice a year. He will obtain games and news from around the state from associate editors in specified regions of the state. He will publish the Bulletin through private enterprise or donated printing services. He will keep a record of the Constitution, and amend it as so ordered by the membership.

ARTICLE V:

The Board of Directors shall consist of the President, Vice-President, Secretary-Treasurer, Postal Director, and Bulletin Editor. They will be charged with the responsibility of running the association meetings. If there is an issue that comes before the Board, in lieu of consensus among the members, a vote shall be taken. If a tie occurs in the voting, the President acting as Chairman, shall cast a tie-breaking vote. The results of the vote are to be given to the Secretary-Treasurer, who will record them and then submit them to the Bulletin Editor for publication.

The Board will not acquire any property, equipment, or printing gear for the association. It may purchase items it deems necessary if the value of the items does not exceed \$25.00. Purchase of any items above this limit would require membership approval at a business meeting. The printing cost of the bulletin is the one exception to this.

ARTICLE VI:

The constitution may be amended by a two-thirds vote of the present membership at an annual business meeting over Labor Day.

ARTICLE VII:

The local organization chosen to host the State Championship must submit all details to WVCA officers four months prior to the latest time the announcement must be in to the USCF. A written contract with the site must be in existence. If this is not done, the President will have the power to select an alternative site for the tournament.

ARTICLE VIII:

Two trustees are to be elected who will be authorized to sign checks and withdraw funds from the WVCA accounts in emergency situations. The term of each trustee is five years. If a trustee must vacate his position before the term expires, a new trustee will be elected at the next business meeting.

ARTICLE IX:

A postal championship will be held every two years. The format will be decided by the Postal Director.

ARTICLE X:

The time control for the annual State Championship shall be conducted at forty (40) moves for the first two (2) hours, and twenty (20) moves per hour thereafter. Sudden death time controls and sudden death playoffs are prohibited at the annual State Championship.

GRAND PRIX '90

The first full year of the WV Grand Prix is now history. This year's competition included three tournaments: WV State Championship 1989, Capitol Open 1990, and the KVO 1990. Numerous other events were held, but only these three met the criteria for the Grand Prix.

Mark Hathaway is our winner and will receive one year's free membership and free entry to the 1990 state championships. Following is the complete final standings:

1.	Mark Hathaway	3.0
2.	Markle Butcher	2.5
	Randy Bierce	2.5
	Alex Chang	2.5
	John Davidson	2.5
	Donald Griffith	2.5
	John Roush	2.5
8.	Jeff Hohn	2.25
	James Walker	2.25
10.	David Michael	1.5
	Gary Morris	1.5
12.	Jerry Dingess	1.25
	Stephen Tucker	1.25
14.	John Brewster	.75
	Chris Burkhammer	.75
	Richard Shaver	.75
	Chuck Waugh	.75

1990 KANAWHA VALLEY OPEN

August 11-12, 1990

Institute, WV

TD- D. Giffith

The KVO was once again contested at the Rehabilitation Center in Institute. The top prize was shared by Mark Hathaway and James Walker. A crosstable of the event and a few games follow.

			1	2	3	4	TOTAL
1.	Bukovac, Robert	2181	W7	L4	-	-	1
2.	Griffith, Donald	2139	W8	D5	W6	L3	2.5
3.	Hathaway, Mark	2119	W9	W12	D4	W2	3.5
4.	Walker, James	2030	W10	W1	D3	W5	3.5
5.	Hardin, Gary	KY 2011	W11	D2	W7	L4	2.5
6.	Blanning, James	NC 1757	L12	W10	L2	-	1
7.	Michael, David	1708	L1	W9	L5	W12	2
8.	Collins, Darrell	1554	L2	W11	FL	-	1
9.	Nayak, Amitabh	1543	L3	L7	FW	L10	1
10.	Ward, Daniel	MI 1506	L4	L6	D11	W9	1.5
11.	Rhodes, Samuel	NC 1357	L5	L8	D10	L13	.5
12.	Hamburg, Armond	OH 1323	W6	L3	W13	L7	2
13.	Morris, Gary	1665	HB	HB	L12	W11	2

MARK HATHAWAY CM - DONALD GRIFFITH CM RUY LOPEZ Closed Chigorin C99

1. e4 e5 2. Nf3 Nc6 3. Bb5 a6 4. Ba4 Nf6 5. O-O Be7 6. Re1 b5
 7. Bb3 O-O 8. c3 d6 9. h3 Na5 10. Bc2 c5 11. d4 Qc7 12. Nbd2 cd4
 13. cd4 Bd7 14. Nf1 Rfc8 ECO gives only 14...Rac8. 15. Re2 b4
 16. Bd3 Qb8 17. Ne3 Bb5 18. Nd5 Nd5 19. ed5 Bf6 20. de5 de5 21. Re4
 Qd6 22. Bb5 ab5 23. b3 Rd8 24. Bb2 Qd5 25. Qd5 Rd5 26. Rc1 Nb7 27. Rb4
 Nd6 28. a4 ba4 29. ba4 This makes the difference. 29...h6 30. g4 g6
 31. Re1 Re8 32. Ra1 Ra8 33. Kf1 Bg7 34. Ke2 f5 35. Nd2 e4 36. Bg7 Kg7
 37. Nb3 Kf6 38. gf5 gf5 39. a5 Rb5 40. Rb5 Nb5 41. Rc1 Ra6 42. Rc5 Nd6
 43. Nd4 f4 44. Rc6 f3+ 45. Ke3 Rc6 46. Nc6 Kf5 47. Kd2 Nc4+ 48. Ke1
 Ke6 49. a6 Nb6 50. h4 h5 51. a7 Kf5 52. Na5 Kg4 53. Nc4 Na8 54. Nd6
 Kh4 55. Ne4 Kg4 56. Kf1 h4 57. Kg1 Nb6 58. Kh2 Na8 59. Nc3 Nb6 60. Nd5
 Na8 61. Ne3+ Kg5 62. Kh3 Nb6 63. Nc4 Na8 64. Nd2 Kf4 65. Kh4 Nc7
 66. Nc4 Na8 67. Ne3 Ke4 68. Kg4 Kd4 69. Kf3 Kc5 70. Ke4 Kb6 71. Nd5+
 Ka7 72. Ke5 Kb6 73. Kd6 Kc8 74. Ke7 1-0

DAVID MICHAEL B - ROBERT BUKOVAC CM FRENCH Advance C02
 Millner-Berry Gambit

1. e4 e6 2. d4 d5 3. e5 c5 4. c3 Nc6 5. Nf3 Bd7 6. Bd3 cd4 7. cd4
 Qb6 8. O-O Nd4 9. Nd4 Qd4 10. Nc3 Qe5 11. Re1 Qb8 12. Nd5 Bd6
 13. Qg4! Kf8 Michael-Riley 1990 continued 13...g6?? +-. White then
 viciously pressured black's kingside. 14. Bd2 h5! 15. Qh3 Bc6 16. Nb4
 Bd7! 17. Nd5 Bc6 18. Nb4 Be8! Burnett-Watson Los Angeles 1982.
 19. Bc3 Nf6 19...Ne7 -+ Watson. 20. Qf3 a5 21. Nc2 21. Bf6 may be
 better. White will now be on the defensive. 21...Bc6 22. Qh3 Ng4
 23. g3 Be5 24. Be5 Ne5 25. Be4? Be4 26. Re4 Nf3+! 27. Kg2 Ng5 28. Qh4
 Ne4 29. Qe4 h4 30. Rd1 Qc7 31. Nd4 h3+ 32. Kg1 Rh6 33. Nb5 Qc6 34. Qc6
 bc6 35. Nc3 Ke7 36. Ne4 Rh5 37. Rc1 Kd7 38. Rd1+ Kc7 39. f4 Rd5!
 Threatening 40...f5, 41...Rd2 with an absolute seventh. 40. Rd5 ed5
 41. Ng5 f6 42. Nh3 Rb8 43. b3 a4 44. ba4 Rb2 45. Nf2 Kd6 46. Nd3 Rd2
 47. Ne1 c5 48. h4 c4 49. a5 c3 50. a6 c2 51. Nc2 Rc2 0-1

JAMES BLANNING B - ARMOND HAMBURG D SICILIAN Najdorf Opocensky B56

1. e4 c5 2. Nf3 d6 3. d4 cd4 4. Nd4 Nf6 5. Nc3 a6 6. Be2 e5 7. Nb3
Be7 8. Be3 b5 9. a3 Bb7 10. Qd3 O-O 11. O-O d5 12. ed5 Nd5 13. Bc5 Nc3
14. Qc3 Nc6 15. Rad1 Qc7 16. Bf3 Better is 16. Be7 Qe7 17. Nc5
intending 18. Rd7 and 19. Rfd1. 16...Rfe8 17. Be7 Re7 18. Rd3??
Ratings must be a little different in North Carolina! 18...e4 19. Be4
Re4 20. Nc5 Re7 21. Rfd1 Rae8 22. Rd7 Rd7 23. Rd7 Qe5 24. Qe5 Re5
25. f4 25. Nb7?? Re1++ 25...Rc5 26. Rb7 Rc2 27. Rb6 f5 28. b4 a5
29. ba5 Na5 30. Rb5 Nc6 31. Rf5 Nd4 32. Rd5 Ne2+ 33. Kf1 Nf4 34. Rg5
Ra2 35. Rg4 Nd5 36. Rd4 Ne3+ 37. Kg1 Not 37. Ke1 Nc2+, although white
is hopeless anyway. 37...Rg2+ 38. Kh1 Ra2 39. h4 Ra3 40. Kh2 Nf5
41. Rb4 Kf7 42. Rc4 Kg6 43. Rb4 Kh5 44. Rb5 g6 45. Rb7 h6 0-1

DONALD GRIFFITH CM - DARRELL COLLINS C BLACKMAR-DIEMER GAMBIT D00

1. e4 d5 2. d4 de4 3. Nc3 Nf6 3...e5! 4. f3 ef3 5. Nf3 Bg4 6. h3
Bf3 7. Qf3 c6 8. Be3 Nd5 9. Bc4 e6 10. O-O Nf6 11. Rf2 Be7 12. Raf1
O-O 13. g4 Nbd7 14. Bd3 Nd5 15. Qe4 N7f6 16. Rf6 Nf6 17. Rf6 g6
18. Rf1 Bf6 19. Qf4 Bg7 20. Qf2 Qb6 21. g5 Qb2 22. Ne4 Rad8 23. Nf6+
Kh8 24. Qh4 Bf6 25. gf6 h5 26. Qg5 1-0

ROBERT BUKOVAC CM - JAMES WALKER CM BENONI Czech A56

1. d4 c5 2. d5 d6 3. c4 e5 4. Nc3 Be7 5. e4 Nf6 6. Bd3 O-O 7. h3
Ne8 8. Nf3 g6 9. Bh6 Ng7 10. g4 Foretelling a kingside theme.
10...Nd6 11. Rg1 Nc7 12. Qe2 Rb8 13. O-O-O This will be an all out
King blitz by white. Black will do the same on the queenside.
13...Bd7 14. Kb1 a6 15. Rdf1 b5 16. Nd2 bc4 17. Nc4 Nb5 18. Bd2 White
is shifting attackers to the defensive. This does not bode well for
white. 18...Ne8 19. Ka1 Bf6 20. f3 Bg5 21. Qe1 Bd2 22. Qd2 Rb7
23. Ne2 Qb8 24. h4 Nd4 25. Nd4 cd4 26. h5 Bb5 27. Rf2 Bc4 28. Bc4 Qa7
29. Rh1 Rc7 30. b3 Nf6 31. Qg4 Ne8 32. Qh6 a5 33. a4 Nf6 34. Qg5 Ne8
35. Qd2 Nf6 36. Rfh2 Qc5 37. Kb2 Qa7 38. Qd3 Rc5 0-1 TIME

JAMES WALKER CM - MARK HATHAWAY CM ENGLISH A16

1. c4 Nf6 2. Nc3 g6 3. g3 Bg7 4. Bg2 c6 5. e4 d6 6. Nge2 Nbd7
7. O-O O-O 8. d3 Rb8 9. a4 a5 10. h3 e5 11. Bg5 Nc5 12. Qc2 Ne6
13. Be3 Nd7 14. Rae1 Ndc5 15. Bc1 Qb6 16. Kh2 Qb3 17. Qb3 Nb3 18. f4
Nec5 19. Rf3 f5 20. Rd1 Nc1 21. Rc1 Be6 22. Re3 Rbd8 23. ef5 gf5
24. Rd1 Nb3 25. Nc1 Nd4 26. Rd2 ef4 27. gf4 Rfe8 28. N3e2 Bf7 29. Rg3
Kf8 30. Nd4 Bd4 31. Ne2 Bf2 32. Rg5 Bg6 33. Bf3 Kf7 34. Rd1 Bh4
35. Rg2 Re3 36. Ng1 Rde8 37. Rdd2 Bf6 38. Bd1 Bd4 39. Nf3 c5 40. h4
Kf6 5/5

ARMOND HAMBURG D - DAVID MICHAEL B FRENCH Winawer C16

1. e4 e6 2. d4 d5 3. Nc3 Bb4 4. e5 b6 Entering a positional
Winawer. This move is usually preceded by 4...Qd7 so if 5. Qg4 f5.
5. Qg4 Bf8 6. Bb5+ c6 7. Bd3 Ba6 8. Ba6 Na6 9. a3 Nc7 10. Nce2 h5
11. Qg3 Ne7 12. Nf3 Nf5 13. Qh3 g6 14. g4 Ne7 Black keeps his knight
on the board in this closed position. The white bishop on a pardon
will now run amuck. 15. Bg5 Qd7 16. Bf6 Rh6 17. Bg5 hg4 18. Qg4 Rh5
19. Ng3 Rh7 20. Bf6 Bh6 21. Ng5 Bg5 22. Qg5 Ng8 23. Ne2 Rh5 24. Qf4
Nf6 25. Qf66 Qe7 26. Qf3 O-O-O 27. Ng3 Rh4 28. O-O-O Nb5 29. c3 g5
30. Qd3 Rf4 31. f3 g4 32. Nh5 Rf3 33. Qh7 Nc3 34. Bc3 Qa3+ 0-1



POSTAL NEWS



The final results of the State Championship are Roush 3, Bruner 2.5, Lietz 2.5, Riley 2, and Marples 0. John Roush is the A Champion, while David Bruner won the B section on tie breaks.

Members wanting to play in the next championship should plan their schedules now. The next postal championships will be starting in January 1991. (See ad on page 16)

DAVID MARPLES CM - DAVID BRUNER B POLISH DEFFENSE A46

1. d4 Nf6 2. Nf3 e6 3. g3 b5 4. Bg2 Bb7 5. O-O c5 6. c3 cd4 7. cd4 Be7 8. Nbd2 8. Bg5 and 8. a4 are more usual here. Kapitaniak. 8...O-O 9. e3 Na6 10. Qe2 Qb6 11. e4 Rac8 12. a3 Rc2 This is premature, the rook will not stick. 13. Ne1 Rc7 14. Nb3 d5 15. e5 That d4 pawn sure locks weak. But after 15. ed5 white would have an isolated pawn. 15...Nd7 16. Bd2 b4 17. a4 Rc4 18. Nd3 Rfc8 19. Rfe1 Nab8 Making way for the support of 20...a5. 20. Qg4 a5 21. h4 Nc6 22. Bd5! 22...ed7? 23. Qd7. White rids himself of the weak d-pawn. 22...Nd4 23. Bb7 Nb3 24. Qd1 Qb7 25. Qb3 Bh4! 26. gh4 Rh4 27. Kf1 Qf3 intending 28...Rh1++ 26. Nf4 Bd8 27. Rad1 Qc6 28. Qd3 Bc7 29. b3 Rc5 30. Rc1 Ne5 31. Rc5 Qc5 32. Qe2 Qc6 33. Rc1 Nf3+? Up two pawns with even colored bishops black looked good, even though the ladies are still present. Now black will take the draw or lose a knight. Bruner originally planned 33...Qb6, but saw the text at the last minute. As usual the first answer is usually right. 34. Kg2 Ne1+ 35. Kg1 Nf3+ 36. Kg2 Ne1+ 37. Kg1 Nf3+ 38. Kg2 5/5 perpetual.

TERRY RILEY A - JOHN ROUSH A CATALAN Open E05

1. d4 Nf6 2. c4 e6 3. g3 d5 4. Bg2 dc4 5. Nf3 Be7 6. O-O O-O 7. Qc2 a6 8. a4 Nbd7 9. Nbd2 c5 10. Nc4 cd4 11. Nd4 Nb6 12. Nb6 Qb6 13. Be3 +- Zwaig-Helmers Norway 1975. White has a positional advantage. See diagram #4 on the next page. 13...Qb4 14. Qb3 Rd8 15. Qb4? This releases most of the tension and will allow black to equalize. 15. Rfd1 would have been better. 15...Bb4 16. Rfd1 Be7 17. Nb3 Nd5 18. Bc5 Bc5 19. Nc5 b6 20. e4 bc5 21. ed5 Rb8 22. Rd2 ed5 23. Bd5?! Pinning the bishop but threatening 24. Bf7+, 25. Rd8. 23...Bg4! 24. Rd3 Kf8 25. Bc4 a5 26. Rc1 Rd3 27. Bd3 Rb2 28. Rc5 Ra2 29. Bb5 Bf3 30. Rc1 Ke7 31. h3 Rd2 32. Kf1 Kd6 33. Ke1 Rd4 34. Bc4 f6 35. Bb5 g5 36. Bc4 h5 5/5 White's defense is comparable to that of Harper's Ferry during the War Between the States. Black obviously has the more active position. Black prefers to be economical, friendly, and above all safe in securing the outright title with this game.

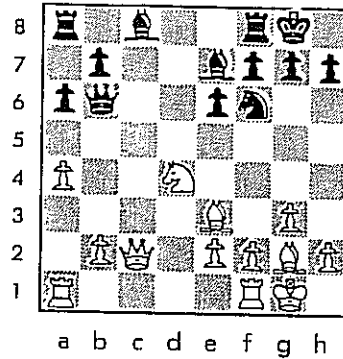


Diagram #4
RILEY - ROUSH
after 13. Be3

DAVID BRUNER (B) - TERRY RILEY (A) FRENCH Winawer C15

1. e4 e6 2. d4 d5 3. Nc3 Bb4 4. a3 White will attempt to punish black for the absent dark bishop. 4...Bc3+ 5. bc3 de4 6. Qg4 Nf6 7. Qg7 Rg8 8. Qh6 c5 9. Ne2 Rg6 10. Qd2 Qa5! Watson. This move restrains c4 and a4-a5. 11. dc5 Qc5?! This must be bad. It defeats the purpose of Qa5. Black must take advantage of his lead in development. After 11...Nc6 the tripled pawns will be hard to defend. 12. Qd4 Nbd7 13. Be3 Qd4 13...Qa5 is better. 14. cd4 Nd5 15. Bd2 N7f6? This takes away a flight square for the knight on d5. 15...N7b6 would have the added affect of restraining the weak c-pawn. 16. c4 Ne7 16...Nb6 to entice 17. c4 might be better. 17. Nf4 Rg8 18. Bc3 Ng6 19. Ng6 Rg6 20. g3 Bd7 21. Be2!? White develops while keeping tabs on his c-pawn. This leaves the kingside open to 21...Bc6. 21. Bg2 was better. 21...Bc6 22. O-O h5 A little premature. 22...O-O-O should be played first. 23. Rad1 O-O-O 24. Rd2 Ng4 25. Rb2? David fails to jump on my position, after the wayward h-pawn attack. The axiom "counter attack in the center" is in order. 25. Rfd1 intending 26. d5! is good here, or 25...e3 26. Bg4 ed3 27. Bh5 with a minor piece, two pawns, and a passed pawn for the rook. 25...h4? The folly continues. An improvement would be 25...f5 intending 26...e3. 26. Bg4 Rg4 27. h3 Rg6 28. Kh2 hg3+ 29. fg3 f5 5/5. White may have the slightly better chances with the outside passer and black's bad bishop. The opposite color bishops may draw.

ATTENTION ALL MEMBERS!

Why continue to belong to the WVCA? A good question!

First you help support chess in the state of West Virginia. Secondly, you gain discounts at some West Virginia tournaments. You will also remain eligible for all three state championships (Regular, Postal, and Speed.). You will also continue to receive this wonderfully incisive publication. You will be eligible to play in out-of-state events requiring state memberships.

But, most important is that the WVCA needs your support. If possible try to enlist your friends. Renewal is only \$7.00 for adults. (I didn't even mention the cost of a pizza!.)



WV POSTAL CHAMPIONSHIP



This will be a chess tournament conducted via written correspondence. It will be a round robin style event. Entrants must be members of both the USCF and WVCA to participate in this event (both are available). Rules will accompany assignment sheets.

The event will be postal rated (This will NOT effect your regular OTB ratings! Postal ratings are completely seperate.).

There will be a first prize of \$15 to the overall top scorer. This prize is based on 5 entries. There will also be a trophy awarded to the top scoring West Virginia resident. This resident will be the official state postal champion.

Entry fee for the event will be \$8.50. Entries must be mailed by December 29, 1990. Assignments will follow in early to mid-January 1991. To enter fill in the following form and return to:

Make checks payable to:

TERRY RILEY
207 N. MAPLE AVE.
MARTINSBURG, WV 25401

(The WVCA Postal Director for 1991-2 will be elected at the Labor Day Championships. This individual will be the tournament secretary.)

NAME _____ USCF# _____ EXP DATE _____

ADDRESS _____ CITY _____

STATE _____ ZIP _____ PHONE #(optional) () _____

USCF POSTAL RATING _____ USCF OTB (regular) RATING _____

WVCA MEMBER: _____ YES _____ WVCA# _____

_____ NO If no add \$7.00 extra.